

supernova.eso.org



**ESO** Supernova  
Planetarium & Visitor Centre



Quarterly Programme | 2018

# October–December



Klaus Tschira Stiftung  
gemeinnützige GmbH



Heidelberg Institute for  
Theoretical Studies



# The ESO Supernova is proudly supported by

## Founding Partners



Klaus Tschira Stiftung  
gemeinnützige GmbH



Heidelberg Institute for  
Theoretical Studies



## Galaxy Partner



## Constellation Partners



EVANS & SUTHERLAND



## Star Partners

We're waiting for you!

## Planet Partner



## Media Partner



## Technology Partners



## Educational Partner



## About the logo

The multiple overlapping stars in our logo symbolise both the energy of a supernova and the vibrant energy of the educational facility. Associations with a spirograph or the repetitive swinging of a pendulum are welcome. The underlying fundamental geometry in the logo comes from the stars used in the ESO logo.



ESO Supernova  
Planetarium & Visitor Centre

## Welcome to the ESO Supernova!



Tania Johnston

As we enter the last quarter of 2018 we would like to take some time to thank all the people who make the ESO Supernova possible.

First and foremost, we would like to thank our starry team, who work with dedication and passion every day to bring you the amazing activities in the ESO Supernova — graphic designers, video producers, writers, proofreaders, exhibition managers, educators, the webteam and IT team, the distribution and administration teams, interns, communicators, planetarium specialists, finance and logistics specialists, receptionists and cleaners.

A special thanks goes to our brilliant team of volunteers. Their help is crucial in offering our visitors the rich programme we currently offer.

Our partners also play a major role with their constant support, regardless of shape or form. In particular, we'd like to thank our individual donors, online or on site, and our shop customers.

Lastly we'd like to thank you, our visitors. Your kind words at the end of a visit are what motivate us every day. We would also like to thank you for your patience. While we have a big team supporting us, our core team is small, yet determined.

All of our standard activities continue to be offered free of charge for the remainder of 2018. As of January 2019, there will be a small charge for activities such as planetarium shows and tours. Entrance to the exhibition and our education programme for children will remain free.

The ESO Supernova will be closed from Monday 24 December 2018 until Tuesday 8 January 2019, inclusive. Enjoy this last quarter of 2018 and see you in 2019!

Tania Johnston  
ESO Supernova Coordinator

## The ESO Supernova Planetarium & Visitor Centre

The ESO Supernova Planetarium & Visitor Centre is a cutting-edge astronomy centre for the public located on the site of ESO's Headquarters in Garching bei München. It was made possible by a cooperation between the European Southern Observatory (ESO) and the Heidelberg Institute for Theoretical Studies (HITS). The building is a donation from the Klaus Tschira Stiftung and ESO runs the facility.

The ESO Supernova is a non-profit educational facility that receives no state funding other than through ESO's normal operating budget. The entrance and all activities are free of charge throughout 2018. From 2019 we will sell tickets for activities like planetarium shows, tours and events. The entrance to the exhibition and our education programme for children will remain free.

The ESO Supernova's vision is to make our community aware and proud of their astronomical achievements. By sharing the fascinating world of astronomy and ESO, we aim to inspire coming generations to appreciate and understand the Universe around us. The ESO Supernova's mission is to engage you — the visitors — as active participants. By designing curriculum-based learning experiences and using Big Data in astronomy to create innovative and authentic visualisations of front-line science, we bring ESO's observing facilities in the Southern Hemisphere closer to you.

The heart of the ESO Supernova is a planetarium with state-of-the-art projection technology, 109 seats, a dome 14 metres in diameter and a scientifically accurate three-dimensional astronomical database, which ensures an authentic and immersive experience. The ESO Supernova also contains a 2200-m<sup>2</sup> interactive astronomical exhibition and guided tours. In addition, school classes can book one of our hands-on workshops.

### ESO Supernova in numbers

13	Themes in the "The Living Universe" exhibition
2200 m <sup>2</sup>	Area of the exhibition space
255 m	Length of the exhibition ramp
109	Seats in the planetarium
14 m	Diameter of the planetarium dome
25°	Inclination of the planetarium dome
15.5 m	Height of the Void
140 m <sup>2</sup>	Area of the Void
2	Seminar rooms
166 m <sup>2</sup>	Total area of the seminar rooms
100 000	Expected number of visitors per year





Planetarium Shows

6

Guided Tours

10

Education Programme

14

Other Activities

16

Your Events at the ESO Supernova

19

Exhibitions

20

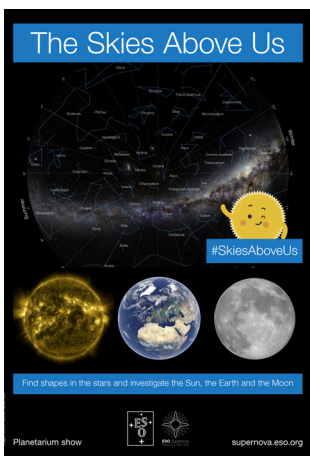
Daily Programme

23

Plan Your Visit

30

### The Skies Above Us



#### Educational show

Designed specifically for our youngest school groups, this educational show investigates the Earth–Moon–Sun system and tells stories of the constellations. This interactive and engaging show is aimed at children aged 4–7.

Duration: 00:45

Languages: EN/DE

### A Tour of the Solar System



#### Educational show

For primary school visitors and young families, this educational planetarium show, ideally suited to children aged 8–11, combines an exploration of the night sky with a factual journey through our Solar System.

Duration: 01:00

Languages: EN/DE

Hidden Universe

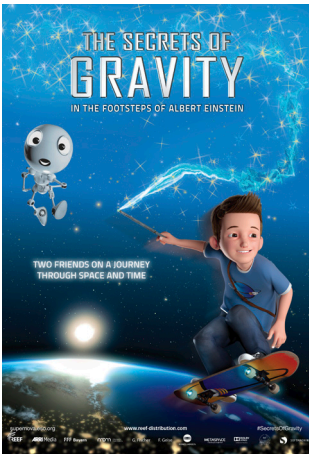


Family show

With the full power of IMAX® cinematography, explore the earliest galaxies and travel the terrain of Mars; witness images of distant celestial structures including stunning new views of the Sun; peer deep inside the Universe’s most mysterious nebulae where stars are born; explore ESO’s flagship facility, the Very Large Telescope (VLT); visit the largest astronomical project in existence, the Atacama Large Millimeter/sub-millimeter Array (ALMA) — all in the film *Hidden Universe*.

Duration: 00:51  
 Languages: EN/DE

The Secrets of Gravity —  
 In the Footsteps of Albert Einstein



Family show

Robot ALBY takes young Luke on a magical journey of discovery through time and space, during which they not only uncover the secrets of gravity, but also learn about friendship and imagination — for both Luke and ALBY have secrets of their own.

Duration: 01:00  
 Languages: EN/DE

### Europe to the Stars

Ages  
10+



#### Family show

Join an epic journey behind the scenes at the most productive ground-based observatory in the world, revealing the science, history, technology and people of the European Southern Observatory.

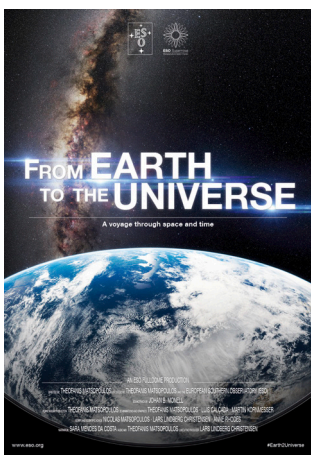
Discover ESO's story of cosmic curiosity, courage and perseverance; a story of observing a Universe of deep mysteries and hidden secrets; and a story of designing, building and operating the most powerful ground-based telescopes on the planet.

Duration: 00:50

Languages: EN/DE

### From Earth to the Universe

Ages  
8+



#### Family show

This stunning voyage through space and time conveys the Universe as revealed to us by science. Revel in the splendour of the Solar System's many worlds. Travel to the colourful birthplaces and burial grounds of stars, and still further out beyond the Milky Way to the unimaginable immensity of a myriad of galaxies. Along the way, you will learn about the history of astronomy, the invention of the telescope, and today's giant telescopes that allow us to probe ever deeper into the Universe.

Duration: 00:47

Languages: EN/DE

The Sun, Our Living Star



Family show

Discover the secrets of our star and experience never-before-seen images of the Sun's turbulent surface in immersive full-dome format. The Sun has shone on our world for four and a half billion years. It is our nearest star and our planet's powerhouse, the source of the energy that drives our winds, our weather and all life.

Duration: 00:40  
 Languages: EN/DE

The Planets – Expedition into the Solar System



Family show

In recent years, space probes have been sent to explore the planets of our Solar System like Mars and Jupiter. In *The Planets – Expedition into the Solar System* you will be taken on a trip to discover our cosmic neighbours through the eyes of these space voyagers. The wonders of the Solar System await you.

Duration: 00:48  
 Languages: EN/DE



# Treffpunkt Führungen *Meeting point tours*

Look for the meeting point sign in the entrance area

The ESO Supernova exhibition is designed to be explored on your own, so you can choose the depth of knowledge you want to access and you also have hands-on exhibits to explore.

But you can also join one of our special guided tours. We offer two different tours, each available in both German and English. Make your choice, reserve a place in advance, print a ticket from a ticket kiosk at the ESO Supernova, and join us. All tours start from the Void, next to the entrance area, and last for about 45 minutes.

## Premises Tour



### Standard tour

Take a peek into the heart of the European Southern Observatory by visiting the ESO Headquarters building, and learn more about the history and future of ESO. The building is normally closed to visitors.

Duration: 00:45

Languages: EN/DE

Max. no. participants: 25



## Exhibition Tour



### Standard tour

Join one of our guided tours to be led through the exhibition and have the opportunity to talk to a real astronomer. Your guide will lead you around the highlights of the exhibition and answer any questions you may have about astronomy.

Duration: 00:45

Languages: EN/DE

Max. no. participants: 25

For practical reasons the guided tours are limited to 25 people. Please ensure that you reserve your tickets in advance. Check the detailed schedule in this programme or on the infoscreens at the ESO Supernova for the starting times of the tours.

[www.bernhardt-partner.de](http://www.bernhardt-partner.de)

# ESO Supernova

---

## Planetarium & Visitor Centre

The ESO Supernova was designed by the architects Bernhardt + Partner. Their office was established in 1994 and is located in Darmstadt, Germany. The team's ability to design eye-catching, memorable science buildings is evident in their past projects, such as the Haus der Astronomie and the EMBL International Centre for Advanced Training (both in Heidelberg).



A conjunction of the planet Venus and the young crescent Moon over the ESO Supernova.







### Education at the ESO Supernova

The ESO Supernova provides unforgettable learning experiences for students of all ages. Professional educators use astronomy to inspire young people and awaken their interest in science and technology, through interactive activities and experiences that will leave a lasting impression. Classes come to the ESO Supernova to discover the wonders of the Universe and to spend time investigating real astronomical problems.

An ESO Supernova educational experience includes interactive planetarium shows, workshops and tours, as well as access to our engaging exhibition. Experiences are adapted to the age of visiting school groups — we welcome students aged 4–18. In addition to our range of family-friendly planetarium shows, we have two specially developed educational shows with strong curriculum links.

We have created six different hands-on workshops tailored to different stages in the school curriculum, from kindergarten to grade 13. Each workshop is linked to the Bavarian curriculum and gives students a fun and interactive experience of what it's like to be an astronomer investigating a real scientific problem. These workshops also demonstrate to teachers how an astronomical context can be used to teach a wide range of curriculum subjects, linking them together in an interdisciplinary way.

A full educational visit lasts between three and four hours. These packages are available in German as well as English. School groups must make advance reservations for workshops, guided tours and planetarium shows. All our educational experiences are **free**.

For teachers, the ESO Supernova offers special teacher training sessions and we coordinate a network of teachers in Bavaria, Germany and Europe.

Please visit our website for additional information!



ESO/P. Horálek

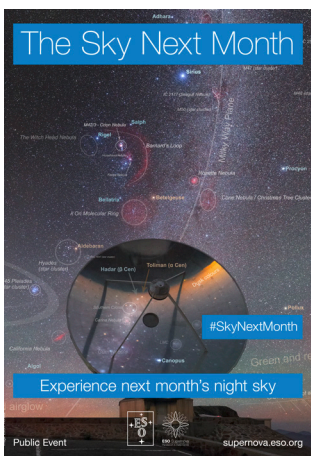


ESO/M. Zamani

Teacher workshops, events and activities



### The Sky Next Month



#### Public talk

A summary of the astronomical highlights to look out for in the coming month's night sky, and a round-up of the latest news.

Duration: 01:00  
Language: DE

Dates: 05.10. | 02.11. | 30.11.

### Open House Day 2018 — Experience the world of ESO first hand



#### Public event

ESO, the world's most productive ground-based observatory, will open its doors to the public on Saturday 13 October 2018 between 11:00 and 18:00 CEST. The ESO Open House Day event will be held at ESO's Headquarters and at the ESO Supernova Planetarium & Visitor Centre, both in Garching, near Munich, Germany. Visitors will have the opportunity to experience the world of ESO first hand by taking part in many different activities. Planetarium shows require pre-booking online.

Duration: 07:00  
Language: EN/DE

Date: 13.10.



## A journey through time and space: Being an astronomer at the European Southern Observatory



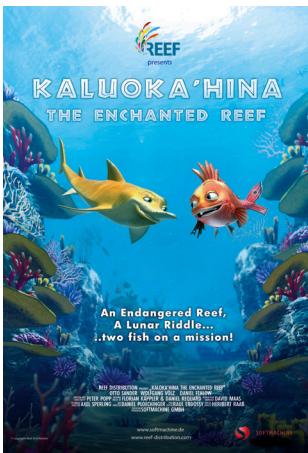
Duration: 01:00  
Language: DE

### Public event

Join Suzanna Randall — ESO astronomer and *Die Astronautin* trainee — as she takes you on a journey into the furthest realms of the Universe: from the planets of our Solar System and the stars of our Milky Way galaxy, to other galaxies and the large-scale structure of our Universe. Suzanna Randall will focus on the unimaginable distances that let us look back in time to the moments just after the Big Bang. Come along and be part of this unique journey as revealed by ESO's telescopes.  
Speaker: Suzanna Randall

Date: 26.10.

## Kaluoka'hina — The Enchanted Reef



Duration: 00:33  
Language: EN/DE

### Family show

Hidden in the vast oceans of our planet is a secret place. A place that no human can ever find because it is protected by an enchantment. The tropical coral reef, Kaluoka'hina, is home to colourful inhabitants that live in a peaceful paradise, until a volcanic catastrophe breaks the spell. Now it's up to two fish to restore the magic of their home Kaluoka'hina. For that, they will have to find a way to touch the Moon.

Date: 16.11.

tonelabs — Fragmented Future



Cultural performance

Musicians Ali and Max, alias tonelabs, live in Munich and produce electronic music which is not just a sequence of sounds, but also an attitude to life. Combining animations and videos from around the world, *Fragmented Future* is an electronic concert that invites you to discover new dimensions.

Duration: 01:30

Language: DE

Date: 14.12.

# A cutting-edge planetarium & astronomy centre for the public

located in Garching bei München,  
at the Headquarters of the  
European Southern Observatory (ESO)

Support the ESO Supernova.  
Donate at [supernova.eso.org/donate](https://supernova.eso.org/donate)

## Your Events at the ESO Supernova

Exploring the Universe is what the ESO Supernova is all about. This engaging, exciting and educational venue can provide a perfect starry backdrop for your event.

The building contains a large exhibition area, which spirals up and down through the whole building, and a spacious area known as the Void that is beautifully illuminated by natural light during the day and lit at night to reproduce the constellations of the southern sky. There are also two seminar rooms, a rooftop terrace, a foyer and a digital planetarium. The ESO Supernova offers a generous space for private events, large or small, with room for up to 600 guests. Depending on your needs, you can use the planetarium as a unique venue for your event, the Void for press conferences held in a modern environment, the exhibition area for an exciting and innovative event, or the seminar rooms for a more classic approach.

Please refer to our Events brochure for more details. For an offer, please fill out the form at: <https://supernova.eso.org/your-event/>



The planetarium



The Void



The exhibition area



The seminar rooms



### The Permanent Exhibition: The Living Universe

The ESO Supernova hosts an outstanding, modern and interactive astronomical exhibition, which is as entertaining as it is educational. Explore, touch and use real astronomical artefacts and conduct experiments to get an idea of what it means to be an astronomer, to work in science, and to discover the mysteries of the Universe.

The exhibition covers the topic of life in the Universe in the broadest sense. It connects you with topics that can seem very distant and abstract by focusing on the human–Universe connection, general astronomy, life in the Universe, and how we observe the Universe using ESO facilities.

Investigate all 13 different themes of the exhibition or select your own highlights. Choose the depth of knowledge you would like for each item, giving you complete control over how deeply you would like to delve into the fascinating science of astronomy.

How long you stay is up to you — you can spend just 30 minutes on a quick walkthrough, or up to four hours on an in-depth study of all the exhibits. You can even make several visits, concentrating on a different part of the exhibition each time!

All information in the exhibition is available in English and German.





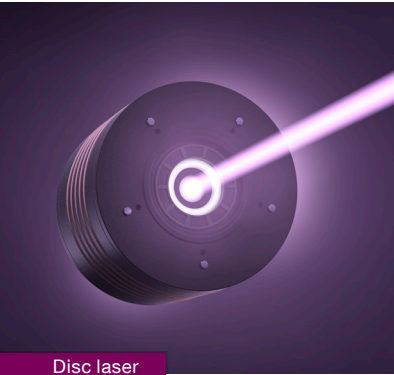
The panels are beautifully designed and very engaging, with explanations suitable for all ages.

At the reception you can get your personal entrance ticket for the exhibition. This ticket contains a unique QR code and an individual URL. Many digital stations in the exhibition are equipped with a QR code reader (a blue box with a red light) which allows you to scan your code — in doing so you create a screenshot of the associated station and store it online. The URL on your ticket contains all the scans you make in the exhibition, creating your own personal take-home exhibition!

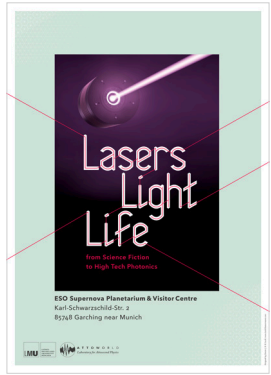
Using your personal smartphone and an app that can read QR codes, you can also scan our panels, each of which has its own code. This way you can re-read the parts you are most interested in again at home, or share the images from the panels with your friends!

Your selfie corner at the

**ESO** Supernova  
Planetarium & Visitor Centre



Disc laser



### Temporary exhibition: Lasers | Light | Life

Light is the engine of life. We are understanding more and more about how to control and use it. Laser technologies are shaping the 21st century and are opening up fascinating technological prospects for us. It all started in 1960, when the laser was invented and a new era of physics began. The laser has long been an indispensable tool in communication, measurement technology, astronomy, medicine, and industry.

From autumn 2018, this fascinating epoch will be presented in the exhibition Lasers, Light, Life — From science fiction to high-tech photonics. Designed by the Faculty of Physics of the Ludwig-Maximilians-Universität München (LMU), it provides insights into laser technology from its very beginnings to the present day, and highlights visionary possibilities for its application. In addition to science fiction, the functioning of lasers and their development history, the exhibition presents fascinating areas of basic research at the LMU and the Max Planck Institute of Quantum Optics in Garching.

The possibilities of the laser are far from exhausted. The 21st century is often referred to as the century of the photon — the very particle of light. Follow the path of light through this exhibition!



ATTO WORLD  
*Laboratory for Attosecond Physics*

Date: From November



Four lasers over ESO's Paranal Observatory

The programme is subject to modifications.  
Please consult the online programme at [supernova.eso.org](http://supernova.eso.org)

## October

### Sky and Historical Events

03.10.2017 *Nobel prize in Physics for the discovery of gravitational waves*

04.10.1957 *Sputnik satellite launched into orbit*

04.10.2011 *Nobel Prize in Physics for discovery of accelerating expansion of the Universe*

05.10.1962 *Foundation of ESO (European Southern Observatory)*

06.10.1995 *Discovery of the first planet around a normal star (51 Pegasi b)*

09.10.2018 *New Moon October*

21.10.2018 *Peak of Orionids meteor shower*

24.10.2018 *Full Moon October*

03.10.18 WED	10:00	SHOW	The Secrets of Gravity	DE
	11:30	SHOW	Europe to the Stars	DE
	12:30	TOUR	Exhibition Tour	DE
	14:00	SHOW	Hidden Universe	DE
	14:30	TOUR	Premises Tour	DE
	15:30	SHOW	The Sun, Our Living Star	DE
04.10.18 THU	10:00	SHOW	The Skies Above Us	DE
	11:30	SHOW	A Tour of the Solar System	DE
	14:00	SHOW	From Earth to the Universe	DE
05.10.18 FRI	15:30	SHOW	Europe to the Stars	EN
	10:00	SHOW	The Skies Above Us	DE
	11:30	SHOW	A Tour of the Solar System	DE
	14:00	SHOW	The Sun, Our Living Star	DE
06.10.18 SAT	15:30	SHOW	Hidden Universe	EN
	19:00	EVENT	The Sky next month	DE
	12:30	SHOW	A Tour of the Solar System	DE
	14:00	SHOW	The Secrets of Gravity	DE
	14:30	TOUR	Exhibition Tour	DE
07.10.18 SUN	15:30	SHOW	Europe to the Stars	EN
	12:30	SHOW	From Earth to the Universe	DE
	13:30	TOUR	Premises Tour	DE
	14:00	SHOW	The Sun, Our Living Star	DE
10.10.18 WED	15:30	SHOW	The Secrets of Gravity	EN
	10:00	SHOW	The Skies Above Us	DE
	11:30	SHOW	A Tour of the Solar System	DE
11.10.18 THU	14:00	SHOW	Europe to the Stars	DE
	15:30	SHOW	The Sun, Our Living Star	EN
	11:30	SHOW	A Tour of the Solar System	DE
12.10.18 FRI	14:00	SHOW	Hidden Universe	DE
	15:30	SHOW	Europe to the Stars	DE
	11:30	SHOW	A Tour of the Solar System	DE
13.10.18 SAT	14:00	SHOW	The Sun, Our Living Star	DE
	15:30	SHOW	From Earth to the Universe	EN
	11:30	SHOW	The sky tonight	DE
	12:30	SHOW	Europe to the Stars	DE
	13:30	SHOW	The sky tonight	DE
	14:30	SHOW	A Tour of the Solar System	DE
	15:30	SHOW	The sky tonight	DE

13.10.18	16:30	SHOW	Europe to the Stars	DE
14.10.18	12:30	SHOW	From Earth to the Universe	DE
SUN	13:30	TOUR	Premises Tour	DE
	14:00	SHOW	The Sun, Our Living Star	DE
	15:30	SHOW	The Secrets of Gravity	DE
17.10.18 WED	10:00	SHOW	The Skies Above Us	DE
	11:30	SHOW	A Tour of the Solar System	DE
	14:00	SHOW	Europe to the Stars	DE
	15:30	SHOW	The Sun, Our Living Star	EN
18.10.18 THU	10:00	SHOW	A Tour of the Solar System	DE
	11:30	SHOW	The Skies Above Us	DE
19.10.18 FRI	10:00	SHOW	A Tour of the Solar System	DE
	11:30	SHOW	The Skies Above Us	DE
	14:00	SHOW	The Sun, Our Living Star	DE
20.10.18 SAT	15:30	SHOW	From Earth to the Universe	DE
	12:30	SHOW	Europe to the Stars	DE
	12:30	TOUR	Exhibition Tour	DE
	14:00	SHOW	From Earth to the Universe	DE
21.10.18 SUN	15:30	SHOW	Europe to the Stars	EN
	12:30	SHOW	A Tour of the Solar System	DE
	13:30	TOUR	Premises Tour	DE
24.10.18 WED	14:00	SHOW	The Sun, Our Living Star	DE
	15:30	SHOW	The Secrets of Gravity	DE
	11:30	SHOW	A Tour of the Solar System	DE
25.10.18 THU	14:00	SHOW	Europe to the Stars	DE
	15:30	SHOW	The Sun, Our Living Star	EN
	10:00	SHOW	The Skies Above Us	DE
26.10.18 FRI	11:30	SHOW	A Tour of the Solar System	DE
	10:00	SHOW	The Skies Above Us	DE
	11:30	SHOW	A Tour of the Solar System	DE
	14:00	SHOW	The Sun, Our Living Star	DE
27.10.18 SAT	15:30	SHOW	Hidden Universe	DE
	19:00	EVENT	A journey through time and space: Being an astronomer at the European Southern Observatory	DE
	12:30	SHOW	A Tour of the Solar System	DE
28.10.18 SUN	12:30	TOUR	Exhibition Tour	DE
	14:00	SHOW	The Secrets of Gravity	DE
	14:30	TOUR	Premises Tour	EN
	15:30	SHOW	Europe to the Stars	EN
	12:30	SHOW	From Earth to the Universe	DE
31.10.18 WED	13:30	TOUR	Premises Tour	DE
	14:00	SHOW	The Sun, Our Living Star	DE
	15:30	SHOW	The Secrets of Gravity	DE
	10:00	SHOW	The Secrets of Gravity	DE
11:30	SHOW	Europe to the Stars	DE	
	12:30	TOUR	Exhibition Tour	DE
	14:00	SHOW	From Earth to the Universe	DE
	14:30	TOUR	Premises Tour	EN
	15:30	SHOW	The Sun, Our Living Star	DE

## November

### Sky and Historical Events

07.11.2018	New Moon November
11.11.1572	<i>Tycho's supernova observation</i>
16.11.2018	Mars occultation by the Moon
17.11.2018	Peak of Leonids meteor shower
23.11.2018	Full Moon November

01.11.18 THU	10:00	SHOW	Europe to the Stars	DE
	11:30	SHOW	The Sun, Our Living Star	EN
	14:00	SHOW	Hidden Universe	DE
02.11.18 FRI	10:00	SHOW	Hidden Universe	DE
	11:30	SHOW	The Secrets of Gravity	DE
	14:00	SHOW	The Sun, Our Living Star	DE
	15:30	SHOW	Europe to the Stars	EN
	19:00	EVENT	The Sky next month	DE
03.11.18 SAT	12:30	SHOW	A Tour of the Solar System	DE
	12:30	TOUR	Exhibition Tour	DE
	14:00	SHOW	The Secrets of Gravity	DE
	14:30	TOUR	Premises Tour	EN
	15:30	SHOW	Europe to the Stars	EN
04.11.18 SUN	12:30	SHOW	From Earth to the Universe	DE
	13:30	TOUR	Premises Tour	DE
	14:00	SHOW	The Sun, Our Living Star	DE
	15:30	SHOW	The Secrets of Gravity	EN
07.11.18 WED	11:30	SHOW	A Tour of the Solar System	DE
	14:00	SHOW	Europe to the Stars	DE
	15:30	SHOW	The Sun, Our Living Star	EN
08.11.18 THU	10:00	SHOW	The Skies Above Us	DE
	11:30	SHOW	A Tour of the Solar System	DE
	14:00	SHOW	From Earth to the Universe	DE
09.11.18 FRI	10:00	SHOW	The Skies Above Us	DE
	11:30	SHOW	A Tour of the Solar System	DE
	14:00	SHOW	The Sun, Our Living Star	DE
	15:30	SHOW	Hidden Universe	EN
10.11.18 SAT	12:30	SHOW	From Earth to the Universe	DE
	12:30	TOUR	Exhibition Tour	DE
	14:00	SHOW	The Secrets of Gravity	DE
	14:30	TOUR	Premises Tour	EN
	15:30	SHOW	Europe to the Stars	EN
11.11.18 SUN	12:30	SHOW	A Tour of the Solar System	DE
	13:30	TOUR	Premises Tour	DE
	14:00	SHOW	The Sun, Our Living Star	DE
	15:30	SHOW	The Secrets of Gravity	DE
14.11.18 WED	11:30	SHOW	A Tour of the Solar System	DE
	14:00	SHOW	Europe to the Stars	DE
	15:30	SHOW	The Sun, Our Living Star	EN

15.11.18 THU	10:00	SHOW	The Skies Above Us	DE
	11:30	SHOW	A Tour of the Solar System	DE
	14:00	SHOW	Hidden Universe	DE
16.11.18 FRI	10:00	SHOW	The Skies Above Us	DE
	11:30	SHOW	A Tour of the Solar System	DE
	14:00	SHOW	The Sun, Our Living Star	DE
	15:30	SHOW	From Earth to the Universe	EN
	19:00	SHOW	Kaluoka'hina — The Enchanted Reef	DE
17.11.18 SAT	12:30	SHOW	A Tour of the Solar System	DE
	12:30	TOUR	Exhibition Tour	DE
	14:00	SHOW	The Secrets of Gravity	DE
	14:30	TOUR	Premises Tour	EN
	15:30	SHOW	Europe to the Stars	EN
18.11.18 SUN	12:30	SHOW	From Earth to the Universe	DE
	13:30	TOUR	Premises Tour	DE
	14:00	SHOW	The Sun, Our Living Star	DE
	15:30	SHOW	The Secrets of Gravity	DE
21.11.18 WED	11:30	SHOW	A Tour of the Solar System	DE
	14:00	SHOW	Europe to the Stars	DE
	15:30	SHOW	The Sun, Our Living Star	EN
22.11.18 THU	10:00	SHOW	The Skies Above Us	DE
	11:30	SHOW	A Tour of the Solar System	DE
	14:00	SHOW	Hidden Universe	DE
23.11.18 FRI	10:00	SHOW	The Skies Above Us	DE
	11:30	SHOW	A Tour of the Solar System	DE
	14:00	SHOW	The Sun, Our Living Star	DE
	15:30	SHOW	From Earth to the Universe	EN
24.11.18 SAT	12:30	SHOW	From Earth to the Universe	DE
	12:30	TOUR	Exhibition Tour	DE
	14:00	SHOW	The Secrets of Gravity	DE
	14:30	TOUR	Premises Tour	EN
	15:30	SHOW	Europe to the Stars	EN
25.11.18 SUN	12:30	SHOW	A Tour of the Solar System	DE
	13:30	TOUR	Premises Tour	DE
	14:00	SHOW	The Sun, Our Living Star	DE
	15:30	SHOW	The Secrets of Gravity	DE
28.11.18 WED	11:30	SHOW	A Tour of the Solar System	DE
	14:00	SHOW	Europe to the Stars	DE
	15:30	SHOW	The Sun, Our Living Star	EN
29.11.18 THU	10:00	SHOW	The Skies Above Us	DE
	11:30	SHOW	A Tour of the Solar System	DE
	14:00	SHOW	Hidden Universe	DE
30.11.18 FRI	10:00	SHOW	The Skies Above Us	DE
	11:30	SHOW	A Tour of the Solar System	DE
	14:00	SHOW	The Sun, Our Living Star	DE
	15:30	SHOW	The Planets — Expedition into the Solar System	EN
	19:00	EVENT	The Sky next month	DE

## December

### Sky and Historical Events

07.12.2018	New Moon December
09.12.2018	Saturn occultation by the Moon
13.12.2018	Peak of Geminids meteor shower
21.12.2018	December solstice
21.12.2018	Planet conjunction (Mercury and Jupiter)
22.12.2018	Full Moon December

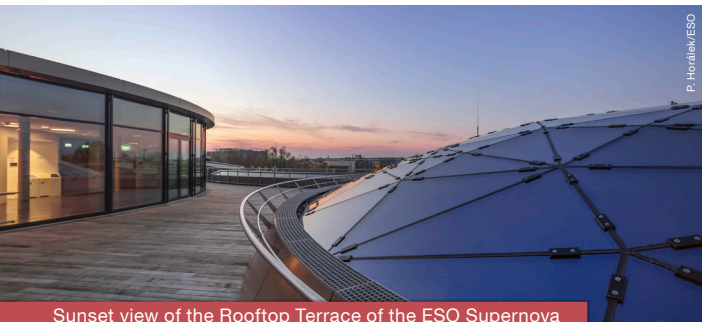
01.12.18 SAT	12:30	SHOW	A Tour of the Solar System	DE
	12:30	TOUR	Exhibition Tour	DE
	14:00	SHOW	The Secrets of Gravity	DE
	14:30	TOUR	Premises Tour	EN
02.12.18 SUN	15:30	SHOW	Hidden Universe	DE
	12:30	SHOW	The Planets — Expedition into the Solar System	DE
	13:30	TOUR	Premises Tour	DE
	14:00	SHOW	The Sun, Our Living Star	DE
05.12.18 WED	15:30	SHOW	The Secrets of Gravity	EN
	11:30	SHOW	A Tour of the Solar System	DE
	14:00	SHOW	Europe to the Stars	DE
06.12.18 THU	15:30	SHOW	The Sun, Our Living Star	EN
	10:00	SHOW	The Skies Above Us	DE
	11:30	SHOW	A Tour of the Solar System	DE
07.12.18 FRI	14:00	SHOW	Hidden Universe	DE
	10:00	SHOW	The Skies Above Us	DE
	11:30	SHOW	A Tour of the Solar System	DE
	14:00	SHOW	The Sun, Our Living Star	DE
08.12.18 SAT	15:30	SHOW	The Planets — Expedition into the Solar System	EN
	12:30	SHOW	The Secrets of Gravity	DE
	12:30	TOUR	Exhibition Tour	DE
	14:00	SHOW	A Tour of the Solar System	DE
09.12.18 SUN	14:30	TOUR	Premises Tour	EN
	15:30	SHOW	Europe to the Stars	EN
	12:30	SHOW	The Planets — Expedition into the Solar System	DE
	13:30	TOUR	Premises Tour	DE
12.12.18 WED	14:00	SHOW	The Sun, Our Living Star	DE
	15:30	SHOW	The Secrets of Gravity	DE
	11:30	SHOW	A Tour of the Solar System	DE
13.12.18 THU	14:00	SHOW	Europe to the Stars	DE
	15:30	SHOW	The Sun, Our Living Star	EN
	10:00	SHOW	The Skies Above Us	DE
14.12.18 FRI	11:30	SHOW	A Tour of the Solar System	DE
	14:00	SHOW	Hidden Universe	DE
	10:00	SHOW	The Skies Above Us	DE
14.12.18 FRI	11:30	SHOW	A Tour of the Solar System	DE
	14:00	SHOW	The Sun, Our Living Star	DE



14.12.18 FRI	15:30	SHOW	The Planets — Expedition into the Solar System	DE
	19:00	EVENT	tonelabs   Fragmented Future	DE
15.12.18 SAT	12:30	SHOW	A Tour of the Solar System	DE
	12:30	TOUR	Exhibition Tour	DE
	14:00	SHOW	The Secrets of Gravity	DE
	14:30	TOUR	Premises Tour	EN
	15:30	SHOW	Europe to the Stars	EN
16.12.18 SUN	12:30	SHOW	The Planets — Expedition into the Solar System	DE
	13:30	TOUR	Premises Tour	DE
	14:00	SHOW	The Sun, Our Living Star	DE
	15:30	SHOW	The Secrets of Gravity	DE
19.12.18 WED	11:30	SHOW	A Tour of the Solar System	DE
	14:00	SHOW	Europe to the Stars	DE
	15:30	SHOW	The Sun, Our Living Star	EN
20.12.18 THU	10:00	SHOW	The Skies Above Us	DE
	11:30	SHOW	A Tour of the Solar System	DE
	14:00	SHOW	Hidden Universe	EN
21.12.18 FRI	10:00	SHOW	The Skies Above Us	DE
	11:30	SHOW	A Tour of the Solar System	DE
	14:00	SHOW	The Sun, Our Living Star	DE
	15:30	SHOW	The Planets — Expedition into the Solar System	DE
22.12.18 SAT	12:30	SHOW	A Tour of the Solar System	DE
	12:30	TOUR	Exhibition Tour	DE
	14:00	SHOW	The Secrets of Gravity	DE
	14:30	TOUR	Premises Tour	EN
	15:30	SHOW	Europe to the Stars	EN
23.12.18 SUN	12:30	SHOW	The Planets — Expedition into the Solar System	DE
	13:30	TOUR	Premises Tour	DE
	14:00	SHOW	The Sun, Our Living Star	DE
	15:30	SHOW	The Secrets of Gravity	DE

We support the  
Natural Sciences, Mathematics  
and Computer Science.

## Plan Your Visit



P. Horálek/ESO

Sunset view of the Rooftop Terrace of the ESO Supernova

## Tickets & Reservations

All admission is free of charge in 2018. You can help us keep the entrance to the exhibition free for everyone by making a donation of your choice. Though free, tickets are still required for planetarium shows, tours and special events and we highly recommend booking in advance online. Tickets are printed from ticket machines on-site. No reservation is needed to visit the exhibition.

If you would like to book an educational workshop, hire one of our rooms for a special event or organise a group visit, please consult the contact information: <https://supernova.eso.org/news/contact/>

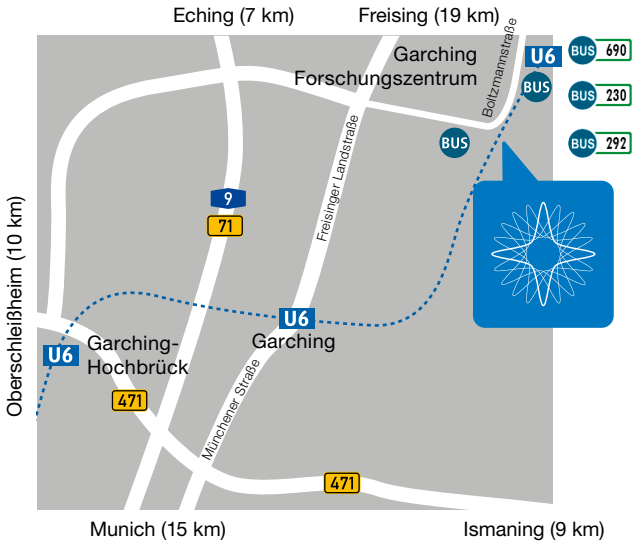
<b>Opening Hours:</b> Monday	Closed
Tuesday	Closed
Wednesday	09:00–17:00
Thursday	09:00–17:00
Friday	09:00–17:00
Saturday	12:00–17:00
Sunday	12:00–17:00

The ESO Supernova will be closed from Monday 24 December 2018 until Tuesday 8 January 2019, inclusive.

*Take a piece  
of the Universe  
with you!*

Visit our ESOshop,  
located in the foyer.





## How to Get Here

The ESO Supernova is located 2 km north-east of Garching and about 15 km north-east of Munich in the “Forschungszentrum” area.

**GPS:** 48° 15' 36.90" N, 11° 40' 15.16" E

**By car:** Take the A9 exit Garching-Nord (Garching-North), which leads you to the “Forschungszentrum” area. Go straight ahead at the traffic lights. ESO is located in the south-east corner of the campus, which is in front of you as the road turns left.

**By subway:** The ESO Supernova is only four minutes on foot from the final station of the U6 line, Garching Forschungszentrum.

**By bus:** Bus stop on Boltzmannstraße: Bus 292 via Oberschleißheim, Bus 230 via Ismaning and Bus 690 via Eching.

Parking is available in front of the ESO Supernova but we recommend using public transport.

Parking for coaches is available behind the main ESO Headquarters building.

Disabled parking is available close to the entrance.

# THE PLANETS

EXPEDITION INTO THE SOLAR SYSTEM



ESO Supernova  
Planetarium & Visitor Centre

[supernova.eso.org](http://supernova.eso.org)

Karl-Schwarzschild-Str. 2, 85748 Garching bei München, Germany

Phone: +49 89 32006 900 E-mail: [supernova@eso.org](mailto:supernova@eso.org)

[www.eso.org](http://www.eso.org)

[f/ESOSupernova](https://www.facebook.com/ESOSupernova)

[@ESOSupernova](https://twitter.com/ESOSupernova)

The ESO Supernova is a donation from the Klaus Tschira Stiftung.



Klaus Tschira Stiftung  
gemeinnützige GmbH



Heidelberg Institute for  
Theoretical Studies

