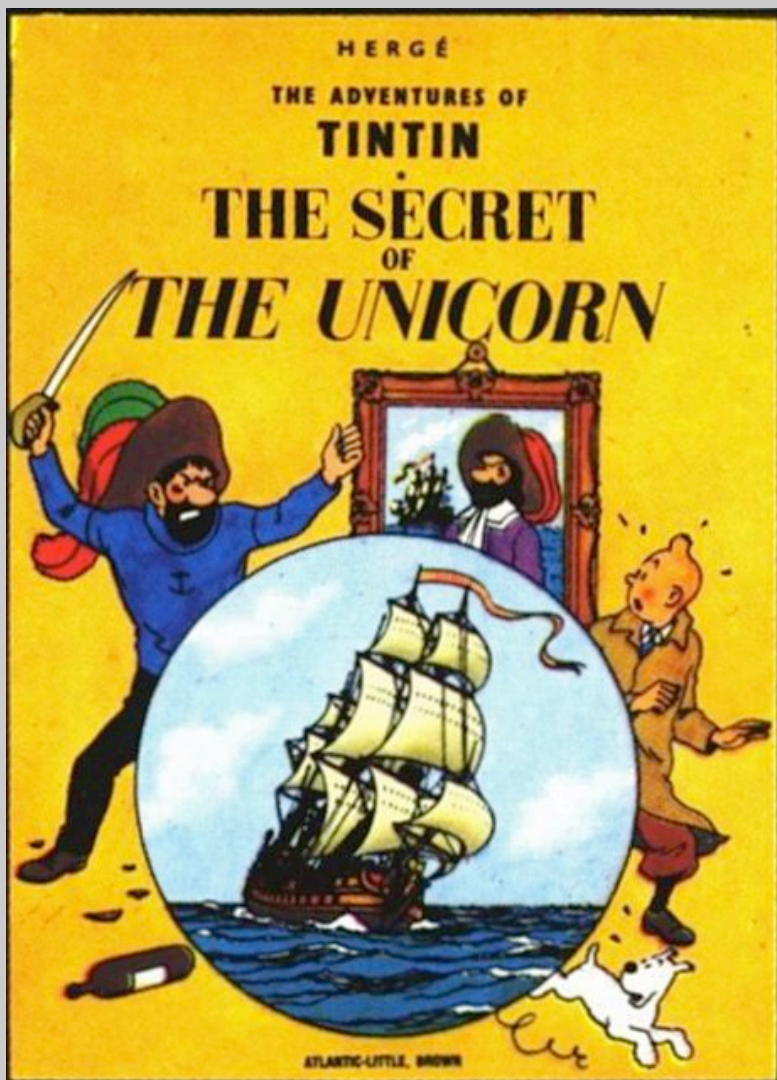


The Secret of the Unicorn:

Uncovering a new structure in the Milky Way



Blair Conn

La Silla, 2p2, WFI IS.



ESO Chile Nov 2007 Fellows Symposium

Why Study the Outer Galactic Disc?

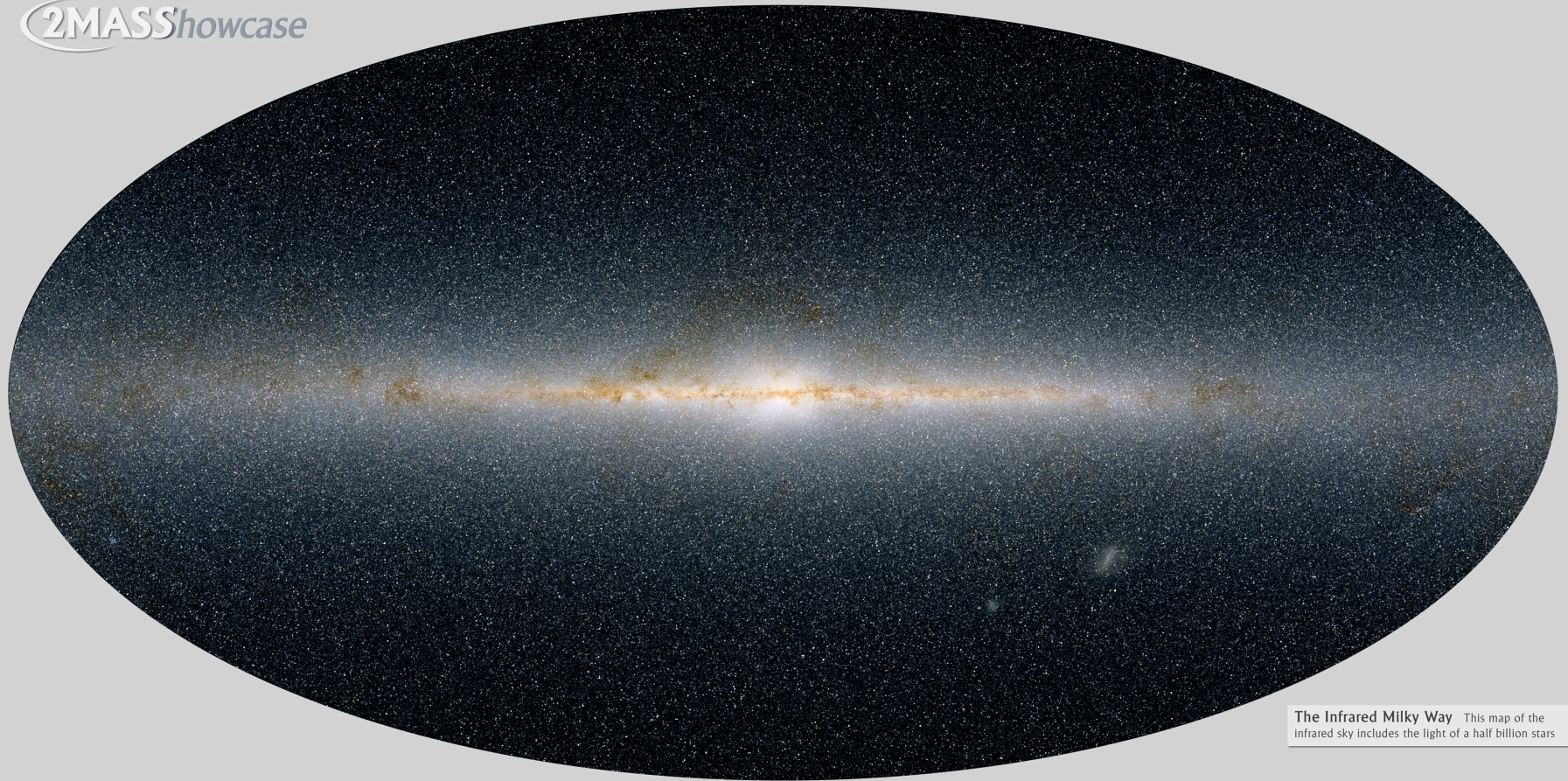
To search for possible evidence of how Galaxy formed

and in particular to see if merger events have played a role in that formation.

The outer Disc is most likely to have remnants of these events due to the long dynamical timescales in that region.

Galactic Structure 101

2MASS Showcase

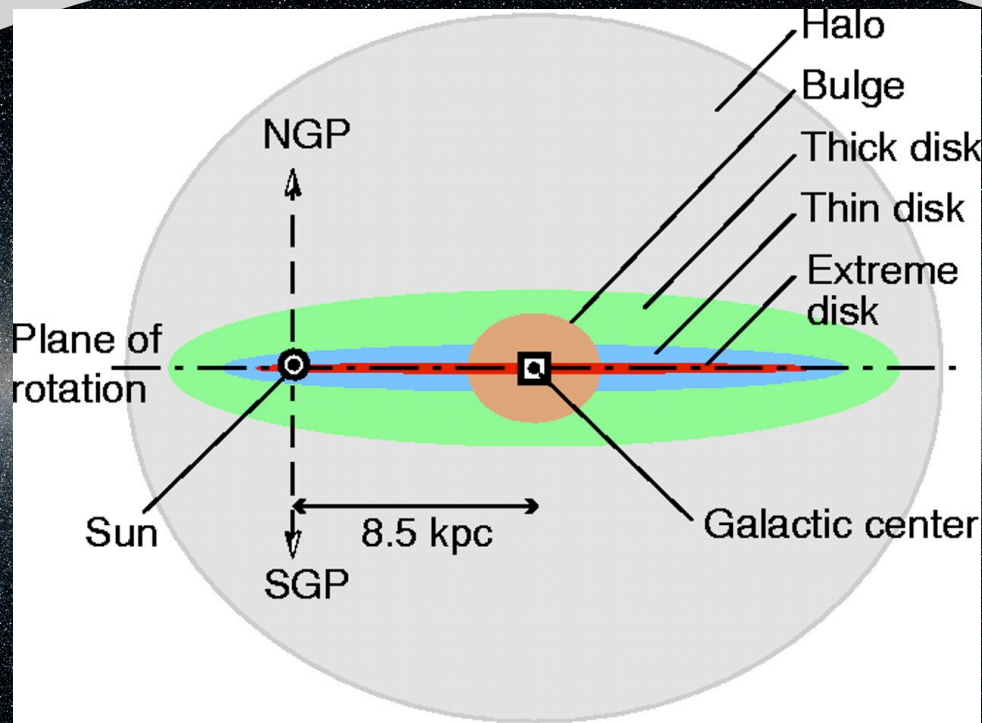


The Infrared Milky Way This map of the infrared sky includes the light of a half billion stars

Two Micron All Sky Survey Image Mosaic; Infrared Processing and Analysis Center/Caltech & University of Massachusetts

Galactic Structure 101

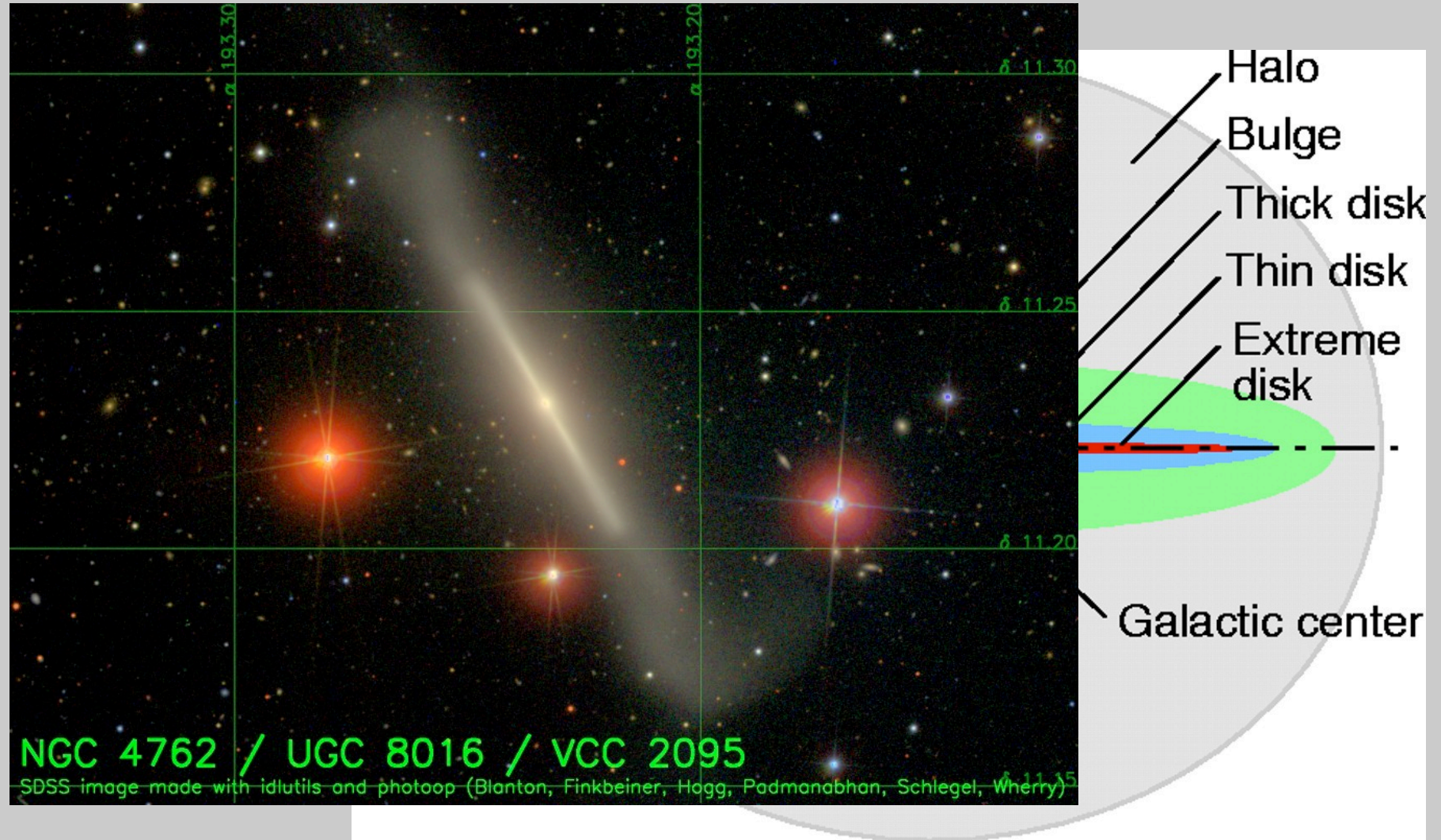
2MASS Showcase



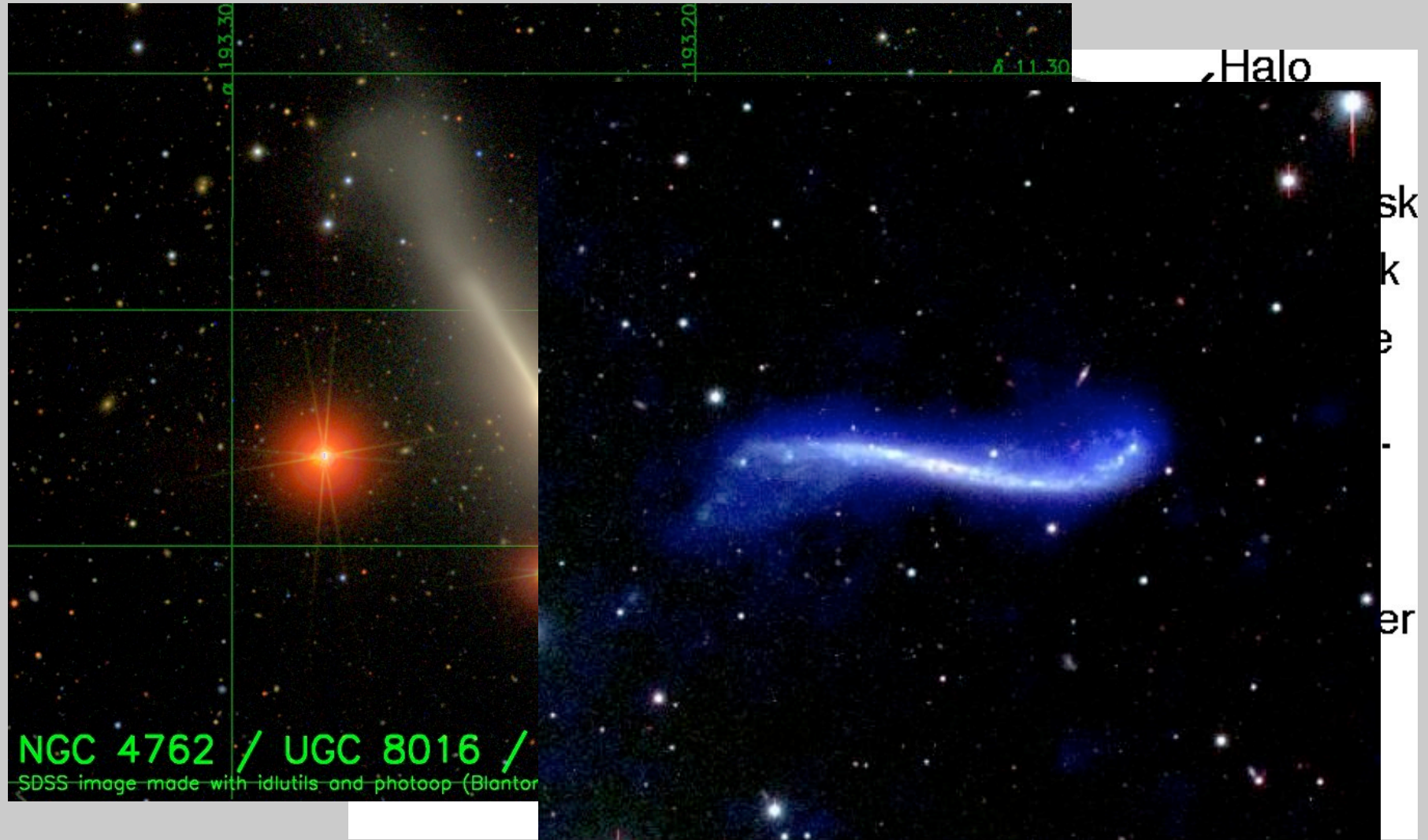
The Infrared Milky Way This map of the infrared sky includes the light of a half billion stars

Two Micron All Sky Survey Image Mosaic; Infrared Processing and Analysis Center/Caltech & University of Massachusetts

Galactic Structure 101

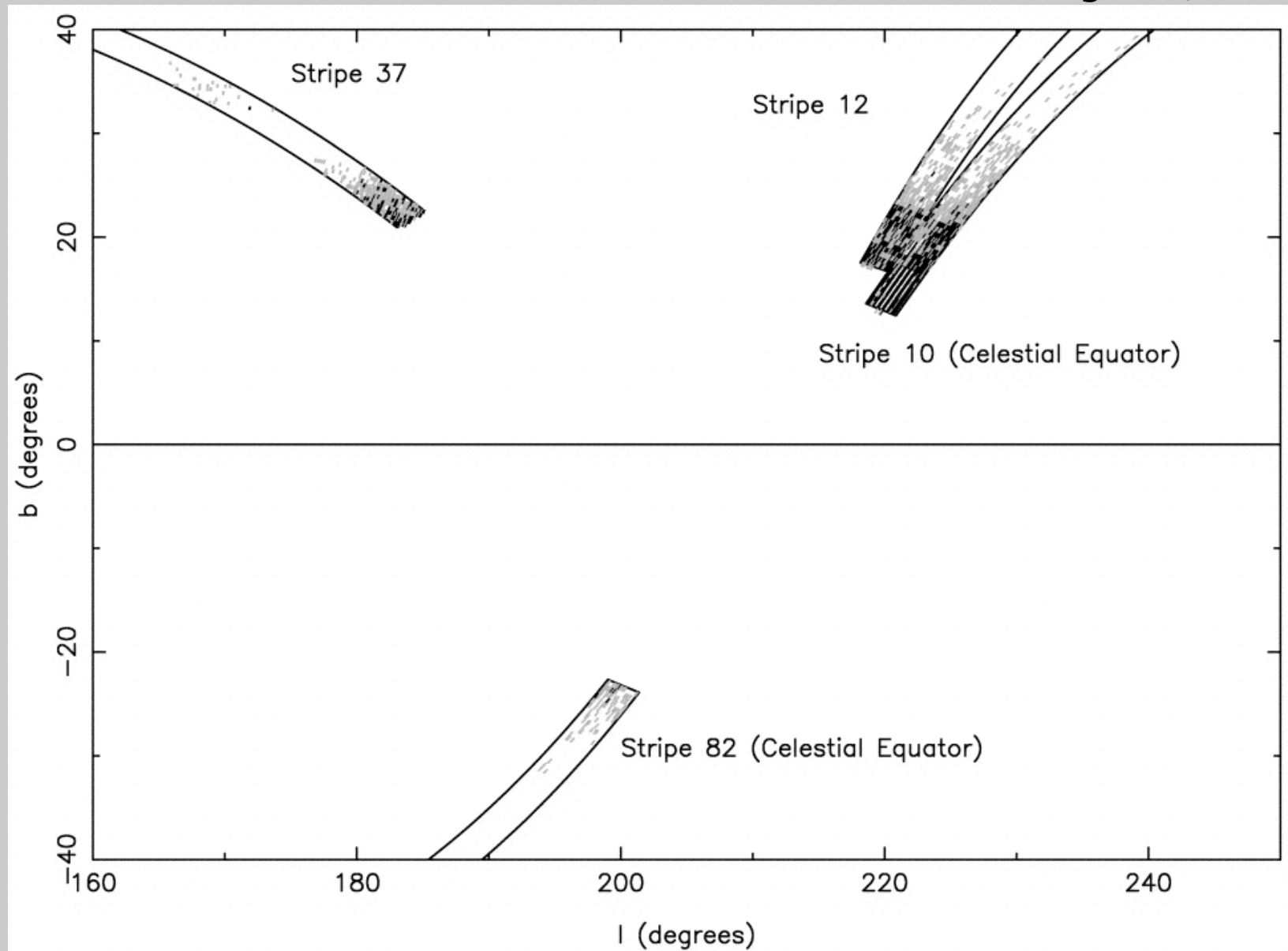


Galactic Structure 101



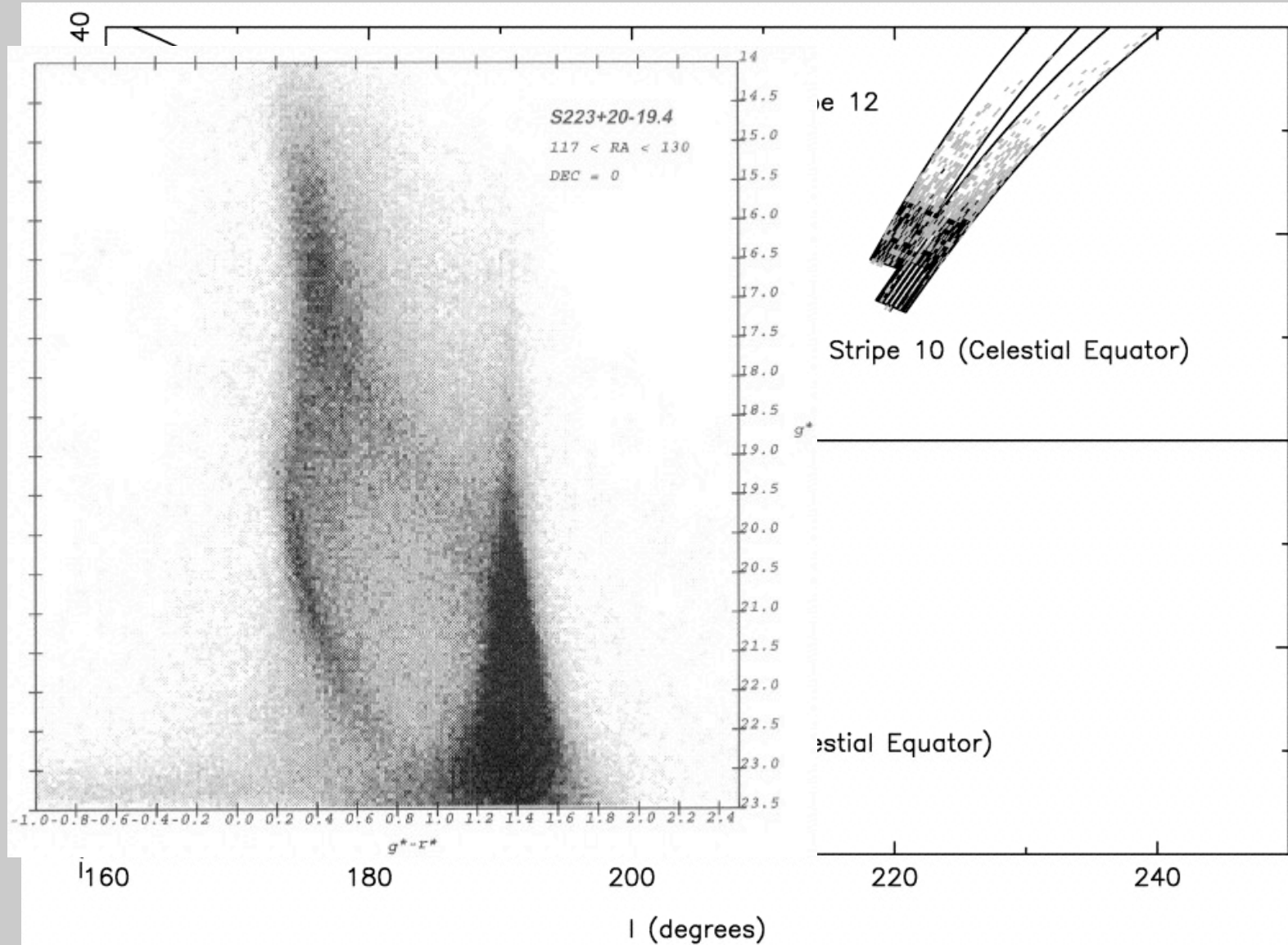
Discovery of the Monoceros Ring in SDSS data

Newberg et al, 2002



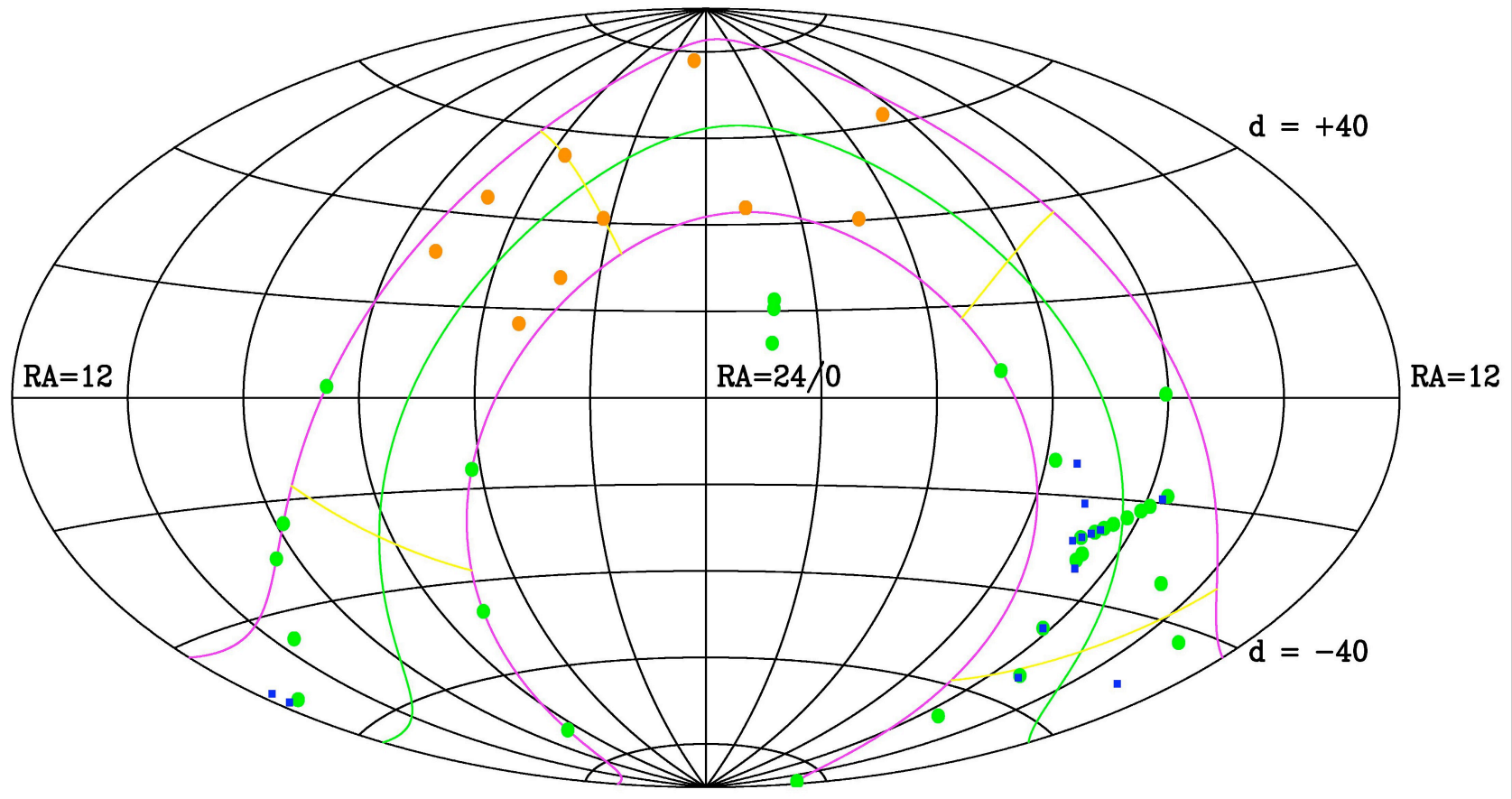
Discovery of the Monoceros Ring in SDSS data

Newberg et al, 2002

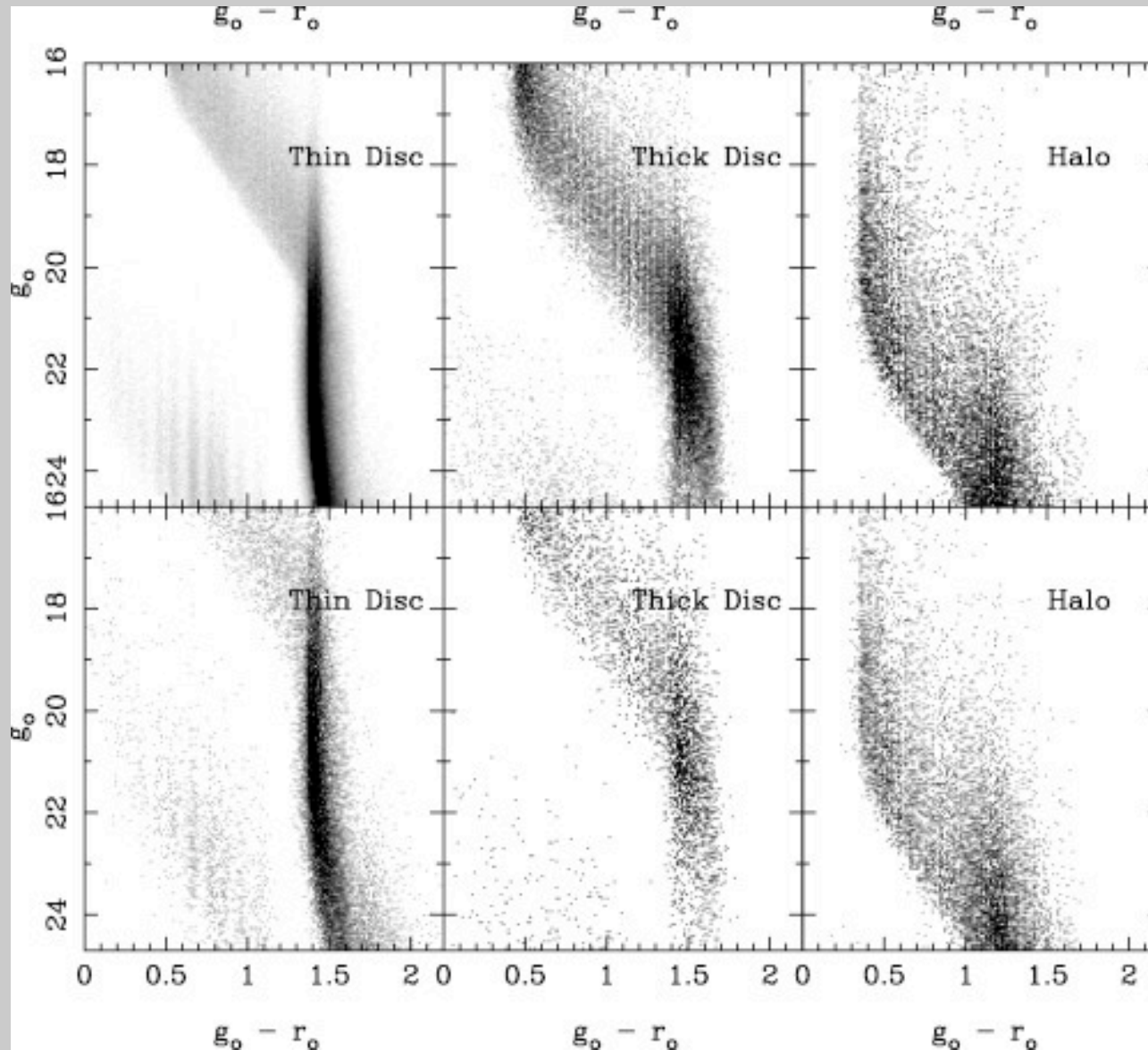


Searching for the Monoceros Ring

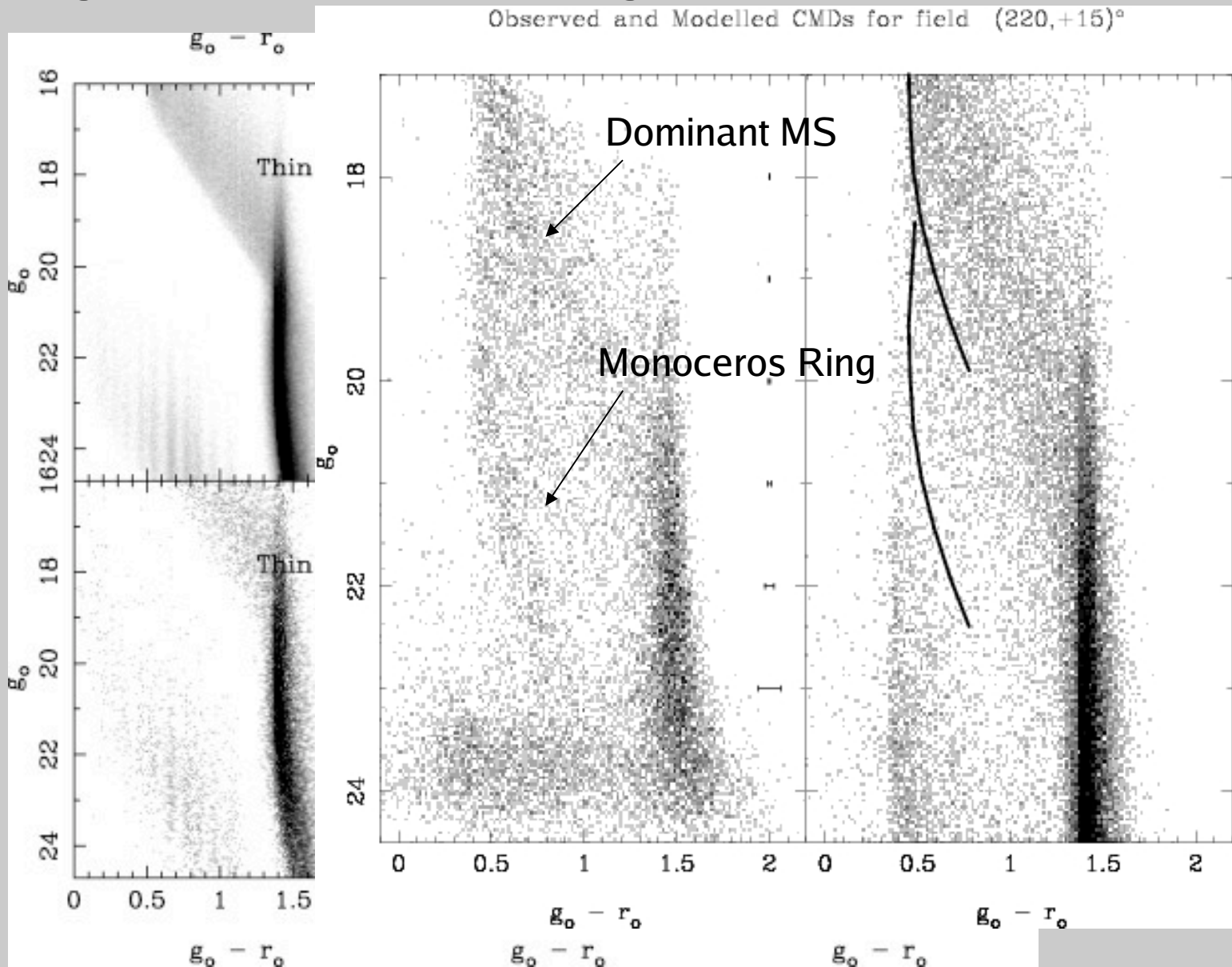
Monoceros Ring/Canis Major dwarf galaxy Survey INT/WFC, AAT/WFI & AAT/2dF



Searching for the Monoceros Ring



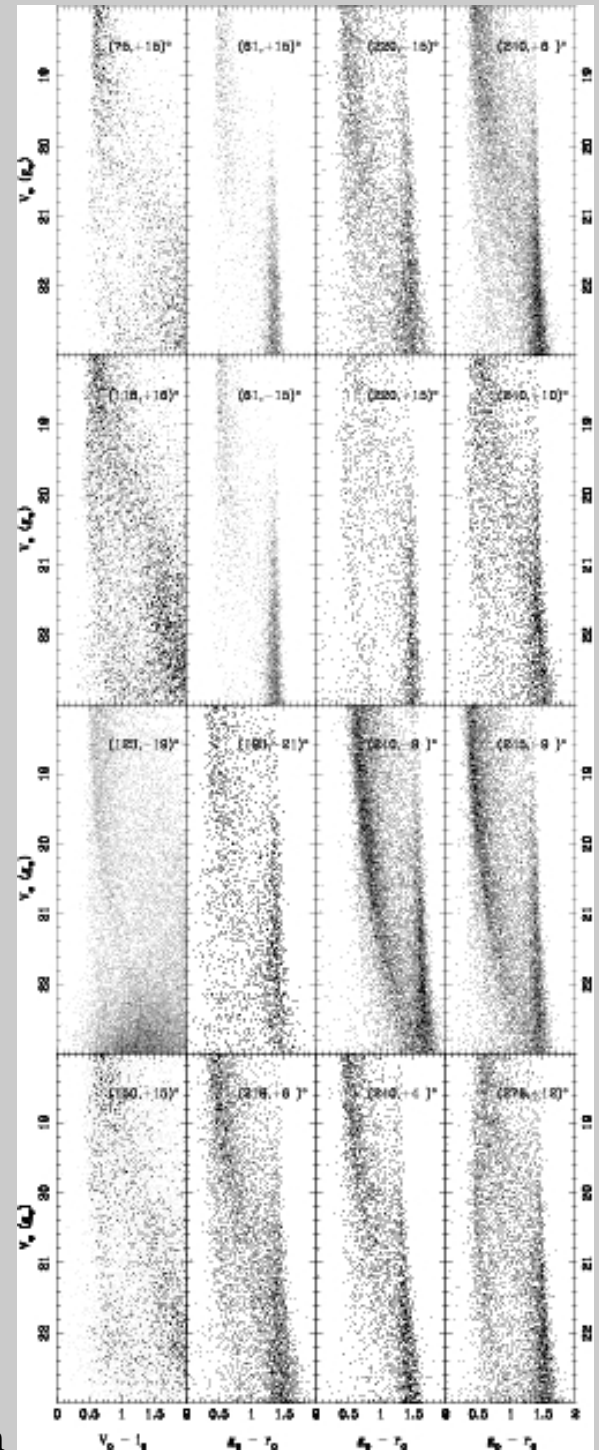
Searching for the Monoceros Ring



So what did we find ?

So what did we find ?

14 detections
+3 maybes

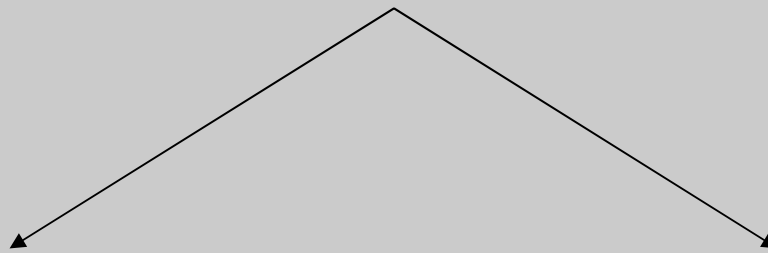


But

What are the other options for the Monoceros Ring?

But

What are the other options for the Monoceros Ring?

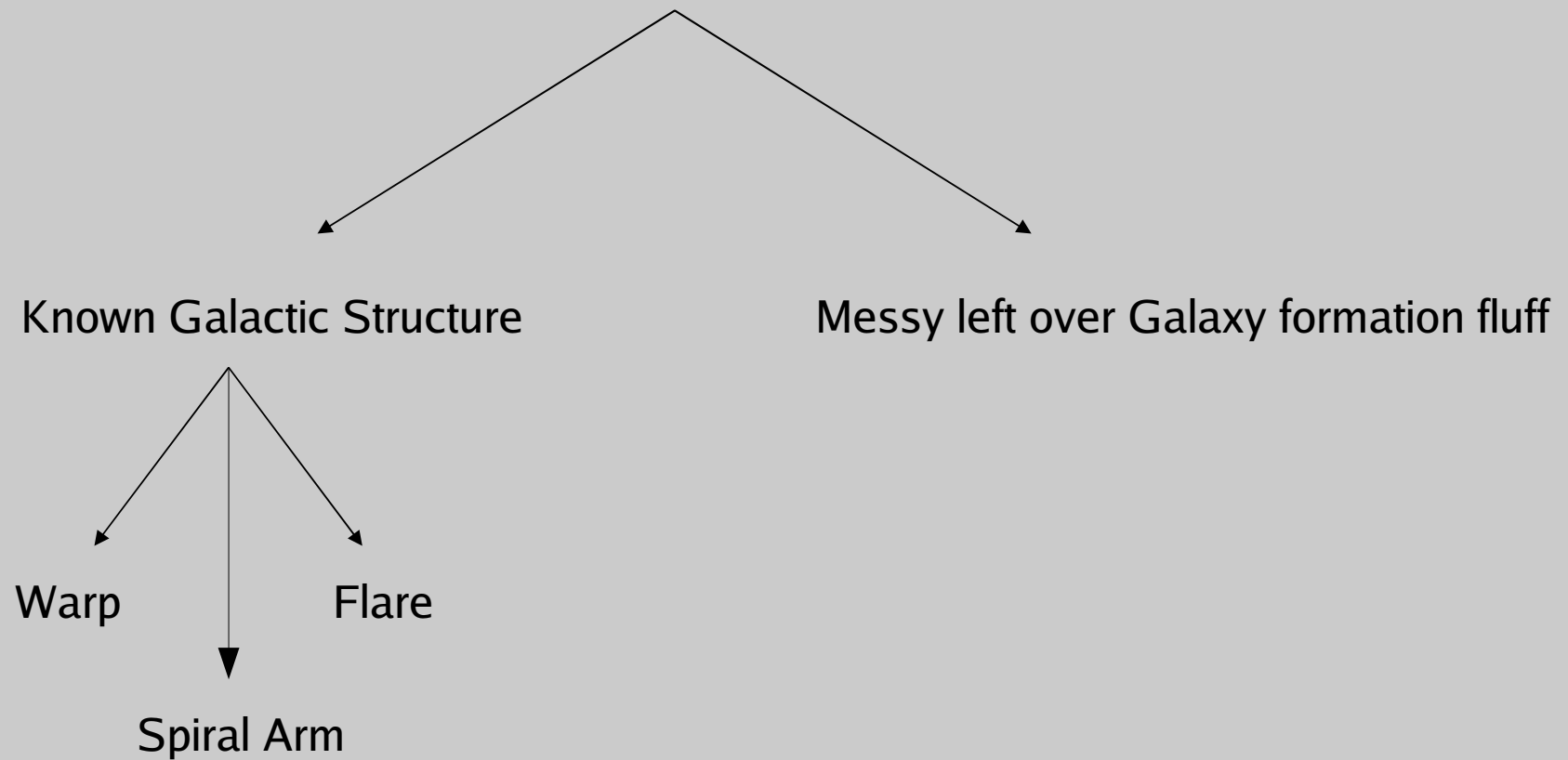


Known Galactic Structure

Messy left over Galaxy formation fluff

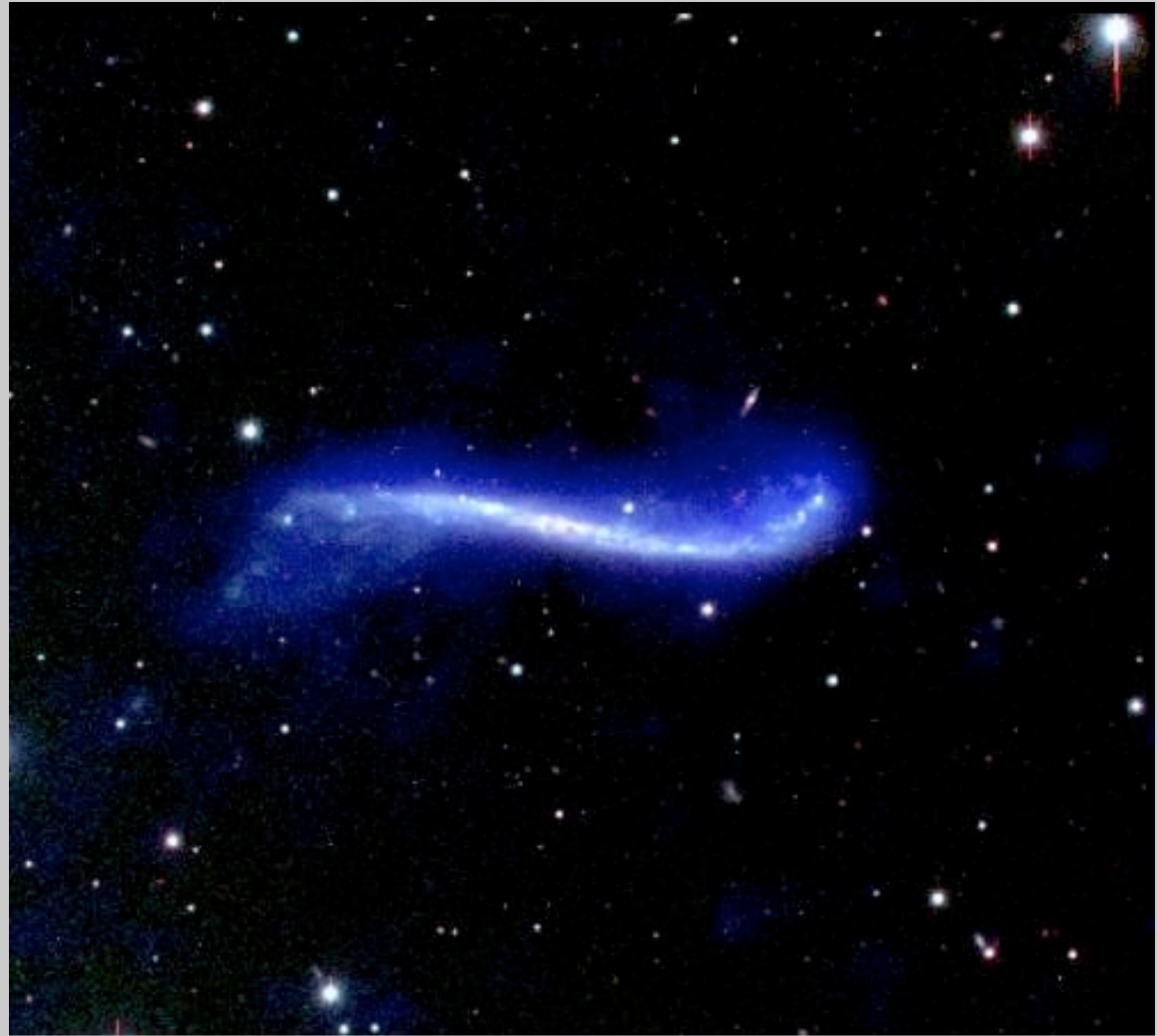
But

What are the other options for the Monoceros Ring?



Warp

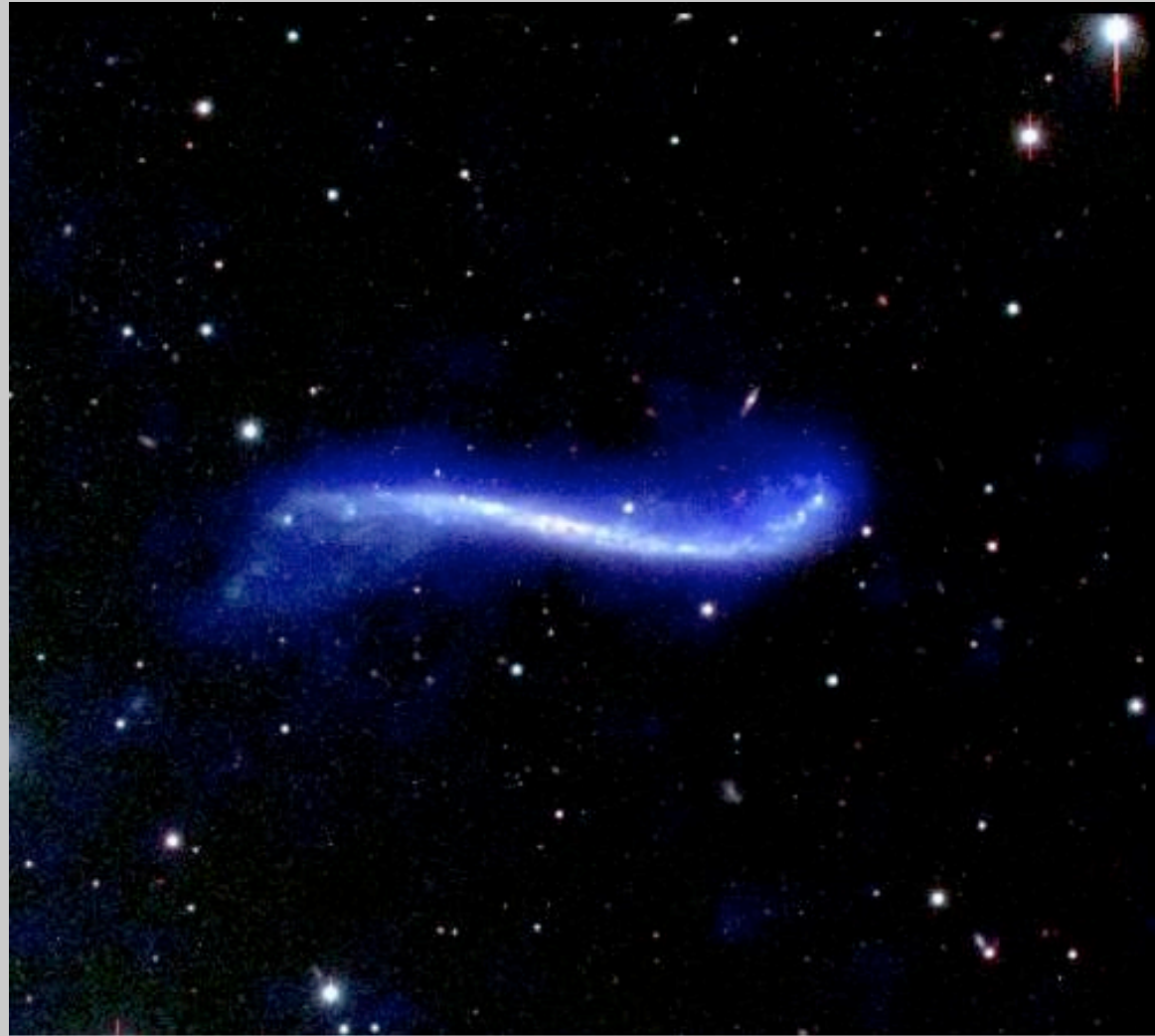
Let's take an extreme
example



UGC 3697

Warp

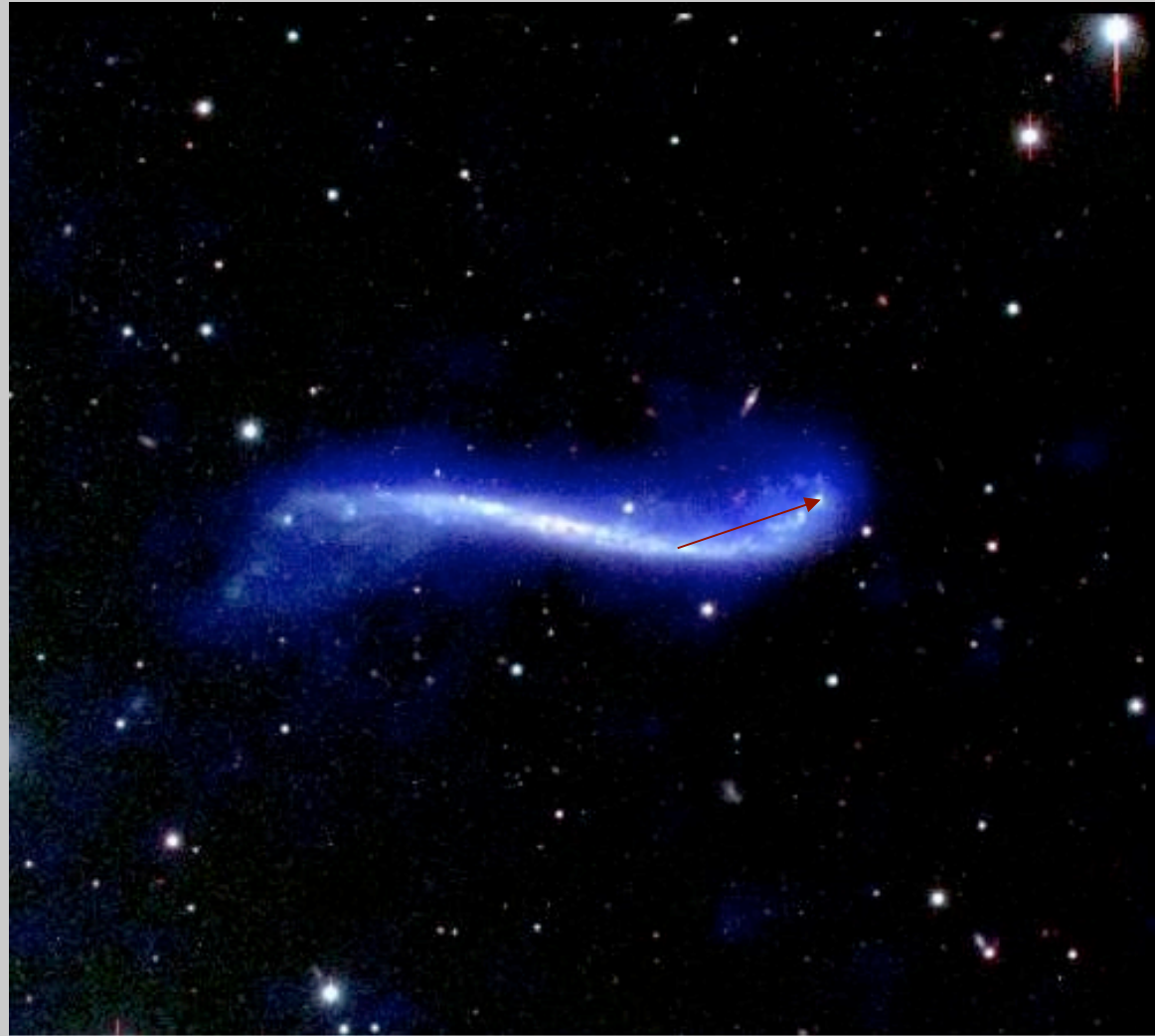
The argument goes that the Canis Major overdensity, the purported progenitor of the Monoceros Ring is simply the shifted midplane of the Galaxy.



UGC 3697

Warp

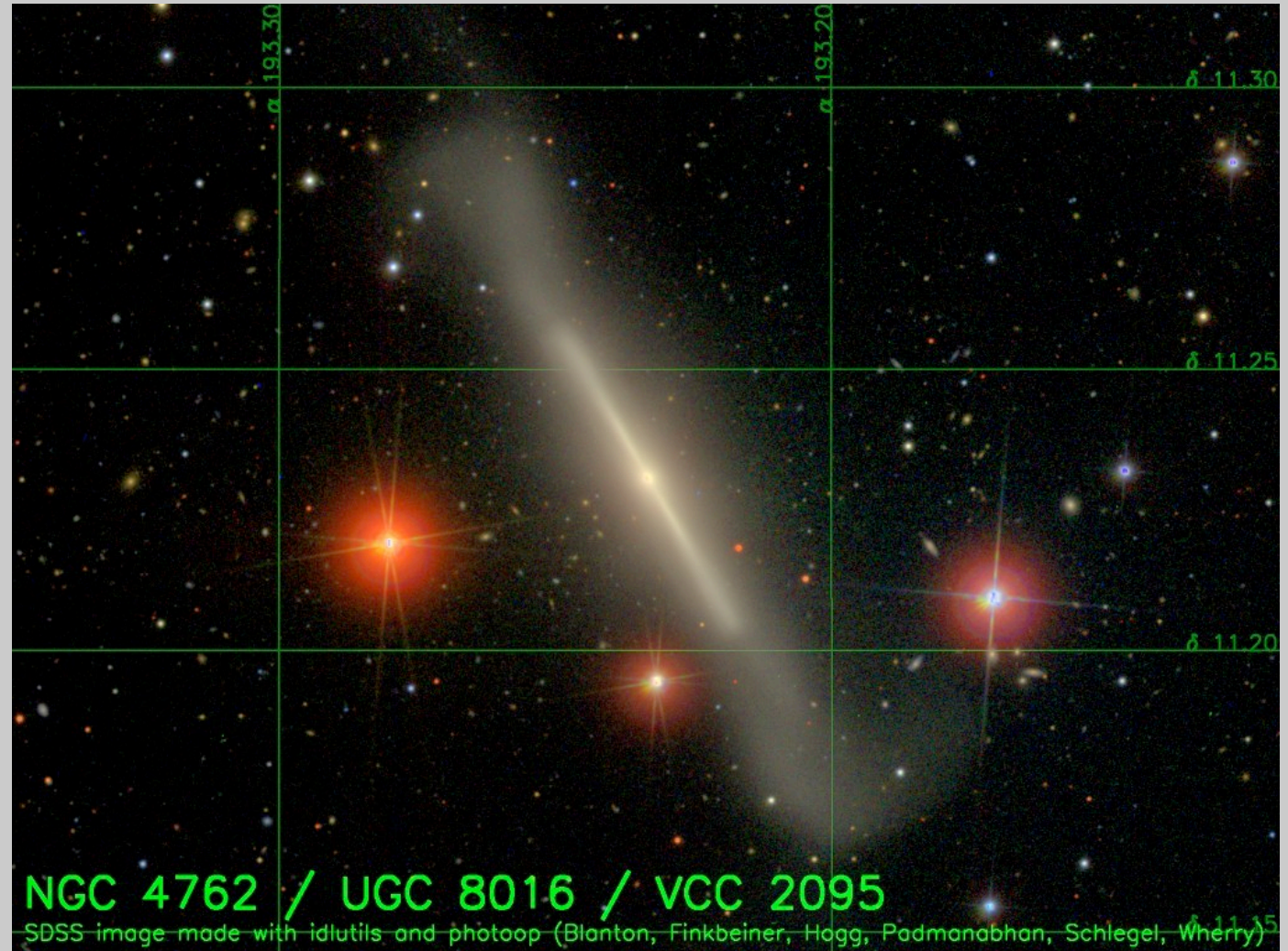
The argument goes that the Canis Major overdensity, the purported progenitor of the Monoceros Ring is simply the shifted midplane of the Galaxy.



UGC 3697

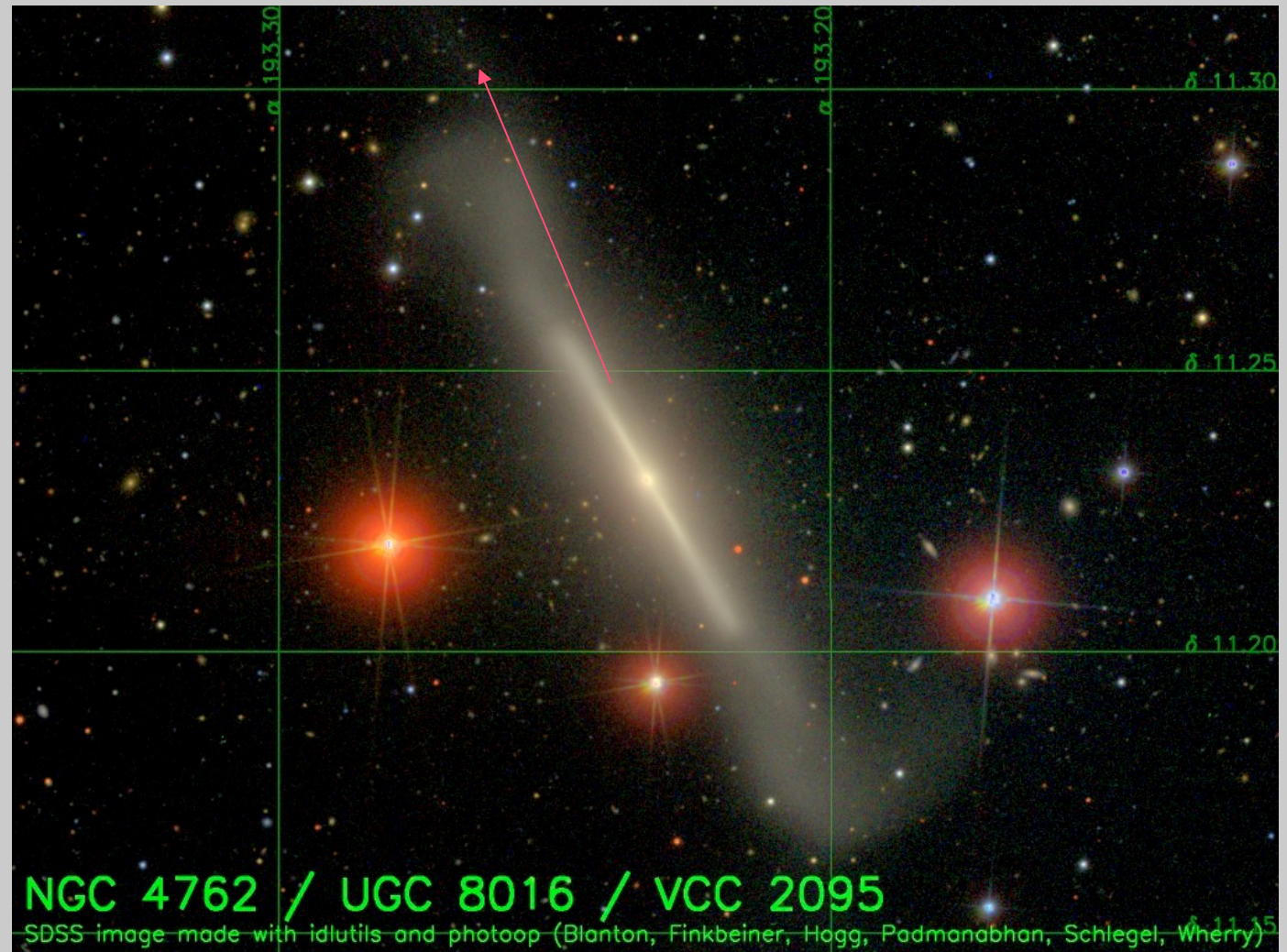
Flare

The Monoceros Ring as the Flare, follows the same logic as the Warp scenario.

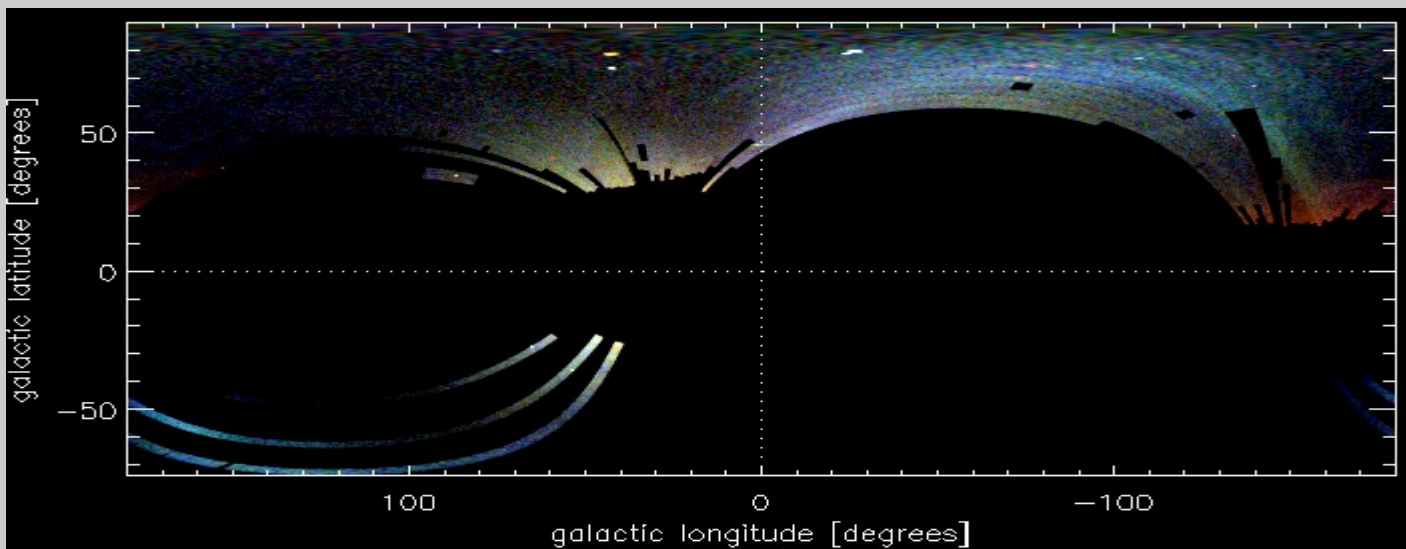
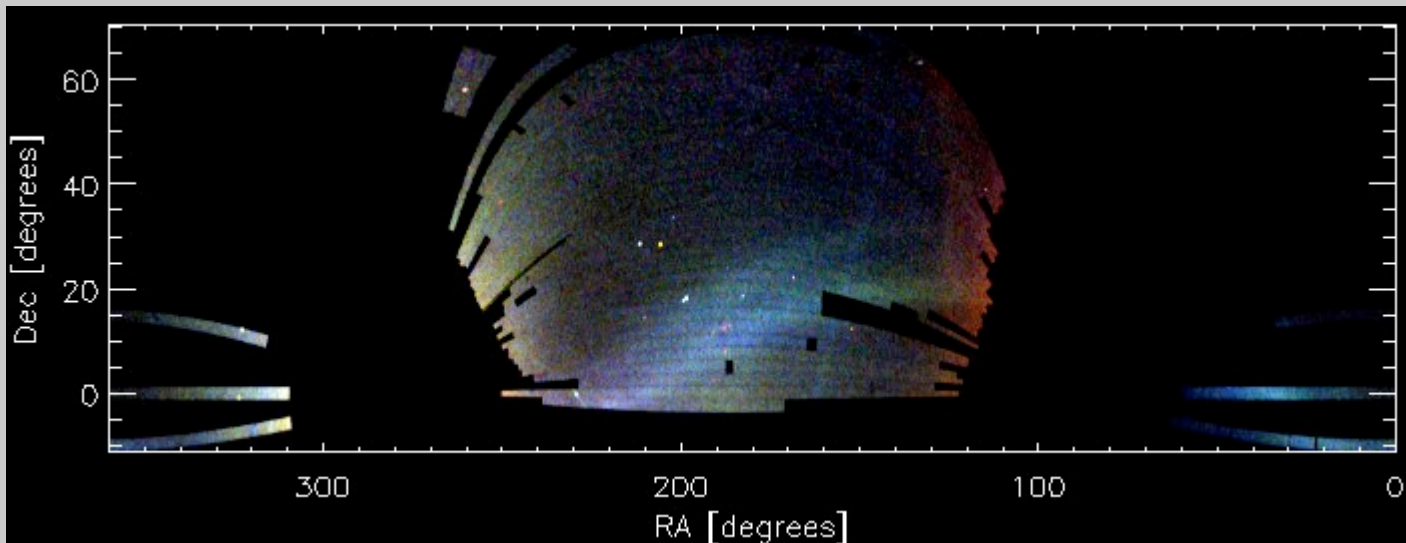


Flare

So the Monoceros Ring appears like this.



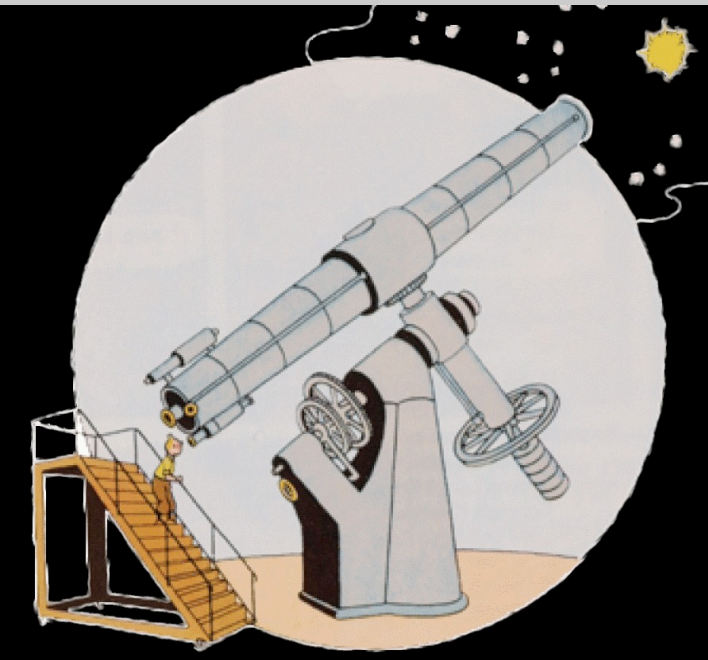
But the new SDSS results look like this ...



Conclusion?

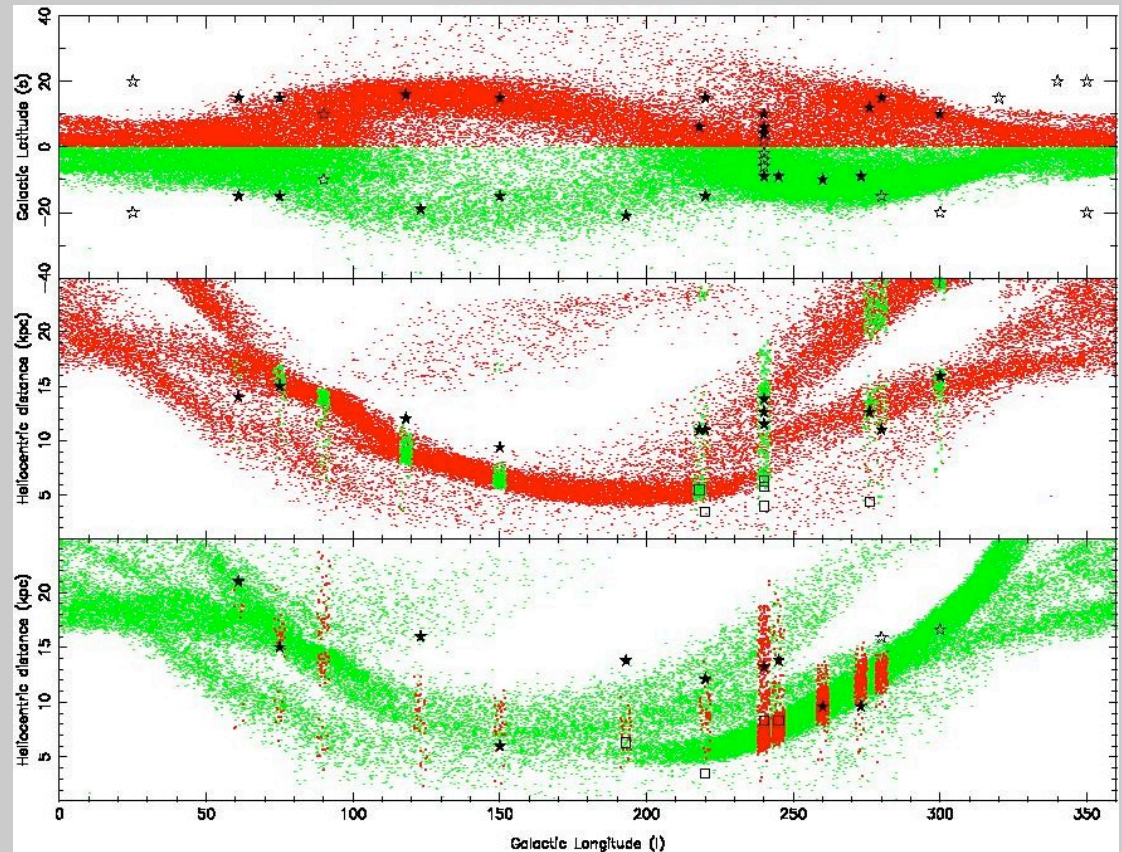
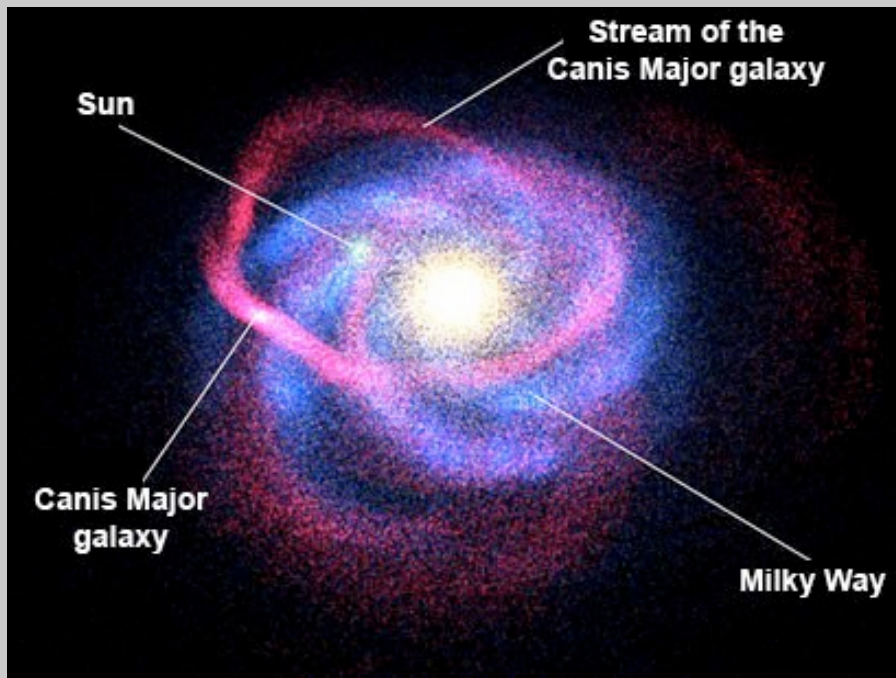


- The Monoceros Ring occupies a distinct region in Galaxy.
- Galactic Structure solutions have problems:
 - The Warp scenario doesn't fit the data very well, but can't be excluded.
 - The Flare solution cannot account for the numbers of stars seen at that distance.
- The Galactic Inner Halo becomes more crowded as time goes by ...



But where can we go from here

How can we test the tidal stream model?



On the way,

- WHT data, tonight ... (pray for clear skies at La Palma)
- Subaru SuprimeCam data (started)
- 2p2/WFI Jan/Feb 2008

